

嶺南大學
LINGNAN UNIVERSITY

Quick Stats

數據一覽

2022



Year of Establishment

嶺大發展和歷史

1888

The Christian College in China, Lingnan's forerunner, was founded in Guangzhou in 1888
1888年，前身格致書院於廣州創立

1967

Lingnan College was re-established in Hong Kong in 1967
1967年，嶺南書院在香港復校

1999

Attained university status in 1999. Renamed as Lingnan University
1999年，嶺南書院升格大學，正名為嶺南大學



1st

International Faculty
國際師資比例

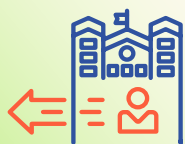
QS Asia University Rankings 2021
2021 QS 亞洲大學排名



1st

Inbound Exchange Students
外來交換生

QS Asia University Rankings 2021
2021 QS 亞洲大學排名



1st

Outbound Exchange Students
出訪交換生

QS Asia University Rankings 2021
2021 QS 亞洲大學排名



Top 3

Quality Education
優質教育

THE University Impact Ranking 2020, 2021, 2022
2020, 2021, 2022 泰晤士高等教育大學影響力排名

5★
RATING

5 Stars

QS Stars
《QS星級評價》中獲得五星級認證
QS Stars University Rating System
QS大學星級評價系統



Top 10

Liberal Arts College in Asia
亞洲十大頂尖博雅學院

Forbes 2015
「福布斯」2015



Top 35

International Faculty
國際師資比例

QS World University Rankings 2021 & 2022
2021及2022 QS世界大學排名

OVERVIEW

綜覽

		Male 男	Female 女	All 總計	Gender Ratio (Male: Female) 男女比例 (男: 女)	% International (Based on Nationality) 國際化百分比 (以國籍釐定)
Student Admission 新入學學生人數 (2021 / 2022)	Undergraduate 本科生	355	567	922	1 : 1.6	22.2%
	Taught Postgraduate 修課式研究生	474	885	1,359	1 : 1.9	91.5%
	Research Postgraduate 研究式研究生	20	23	43	1 : 1.2	81.4%
	All 總計	849	1,475	2,324	1 : 1.7	63.9%
Student Enrollment 學生就讀人數 (2021 / 2022)	Undergraduate 本科生	1,094	1,794	2,888	1 : 1.6	18.1%
	Taught Postgraduate 修課式研究生	477	910	1,387	1 : 1.9	90.0%
	Research Postgraduate 研究式研究生	55	40	95	1 : 0.7	81.1%
	All 總計	1,626	2,744	4,370	1 : 1.7	42.3%
Graduates 畢業生 (2020 / 2021)	Undergraduate 本科生	230	410	640	1 : 1.8	10.8%
	Taught Postgraduate 修課式研究生	242	442	684	1 : 1.8	89.0%
	Research Postgraduate 研究式研究生	22	12	34	1 : 0.5	79.4%
	All 總計	494	864	1,358	1 : 1.7	51.9%

Note: Figures are in headcounts and include all funding sources
 註: 人數包括所有資助來源

STAFF PROFILES 2021 / 2022

2021 / 2022 年度教職員數據

(As of 30 Sep 2021)
(截至2021年9月30日)

Staff*
教職員*
(2021/ 2022)

	Male 男	Female 女	All 總計	Gender Ratio (Male: Female) 男女比例 (男: 女)	% International (Based on Nationality) 國際化百分比 (以國籍釐定)
Academic Staff 教學人員	140	82	222	1 : 0.6	68.0%
Professoriate ⁽¹⁾ 教授人員	122	62	184	1 : 0.5	70.7%
Non-professoriate Teaching ⁽²⁾ 教學人員	18	20	38	1 : 1.1	55.3%
Non-Academic Staff 非教學人員	143	304	447	1 : 2.1	16.8%
Administrative and Support 行政及支援人員	122	301	423	1 : 2.5	17.3%
Technical 技術人員	21	3	24	1 : 0.1	8.3%
All Staff 全體人員	283	386	669	1 : 1.4	33.8%

* Excluding visiting, honorary and adjunct staff
教職員人數不包括客座、名譽及兼任教職員

* Figures are in headcounts and include all funding sources
人數包括所有資助來源

(1) Professoriate staff includes Assistant Professor or above and Postdoctoral Fellow
教授人員包括助理教授或以上及博士後研究員

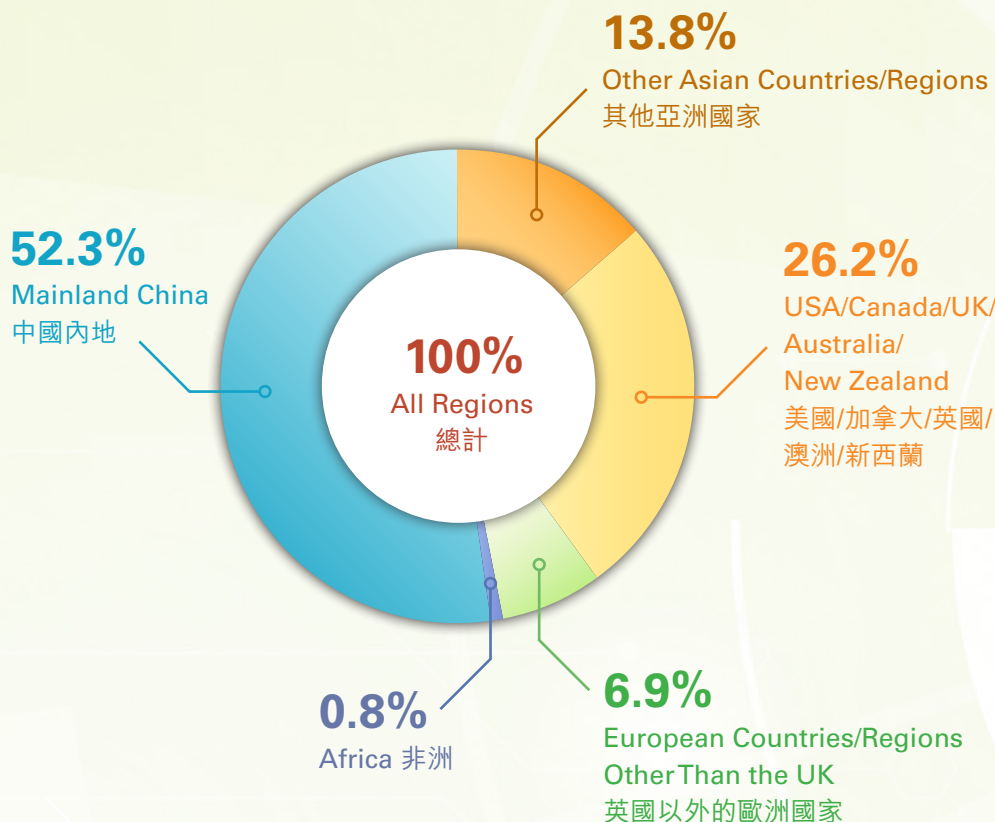
(2) Non-professoriate teaching staff includes Senior Lecturer or below
教學人員包括高級講師或以下

Distribution of International Professoriate Staff (Based on Nationality)

(Excluding Honorary / Visiting / Adjunct)

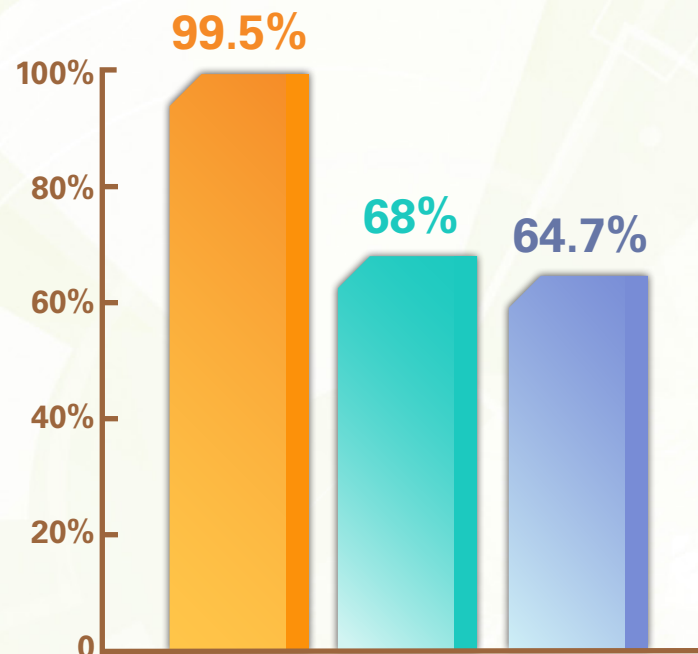
國際教授人員（以國籍釐定）

分佈人數（不包括名譽 / 客座 / 兼任教授人員）



Professoriate Staff⁽¹⁾ Qualifications

教授人員⁽¹⁾資格



- ▶ Professoriate Staff with PhD or Doctorate Qualifications
具有博士學位的教授人員
- ▶ Professoriate Staff with International Background (Based on Nationality)
具有國際背景的教授人員 (以國籍釐定)
- ▶ Professoriate Staff with International Experience (Post-secondary education studied overseas)
具有國際經驗的教授人員 (海外留學)

(1) Professoriate staff includes Assistant Professor or above and Postdoctoral Fellow
教授人員包括助理教授或以上及博士後研究員

STUDENT PROFILES 2021 / 2022

2021 / 2022 年度學生人數總覽

Enrollment of Students in All Programmes (In Headcounts)

所有課程就讀學生人數

Faculty 學院	Undergraduate 本科生	Taught Postgraduate 修課式研究生	Research Postgraduate 研究式研究生	All Levels 全部課程
Arts 文學	1,226	148	27	1,401
Business 商學	855	601	18	1,474
Social Sciences 社會科學	733	243	34	1,010
Science 科學	74	-	5	79
School of Graduate Studies 研究生院*	-	395	11	406
All Faculties 全校學院合計	2,888	1,387	95	4,370
In % Distribution 分佈百分比	66.1%	31.7%	2.2%	100%

* Figure includes the TPg programme jointly offered with LIFE
人數包括與嶺南大學持續進修學院合辦的修課式研究生課程

Enrollment of International Students (Based on Nationality) in All Programmes (Excluding Exchange-in Students)

所有課程國際學生（以國籍釐定）就讀人數（不包括交換生）

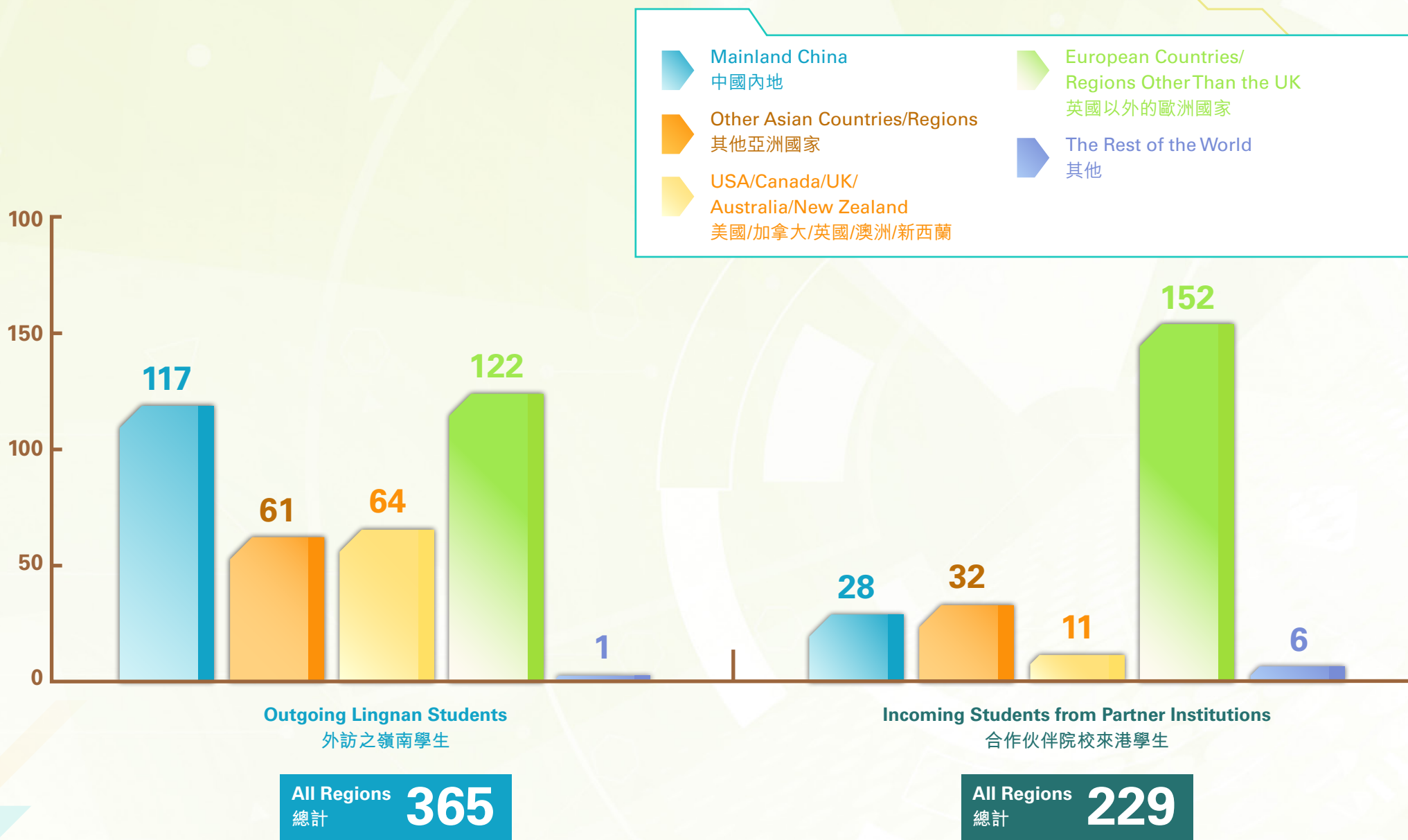
Region 地區	Undergraduate 本科生	Taught Postgraduate 修課式研究生	Research Postgraduate 研究式研究生	All Levels 全部課程	% Undergraduate 本科生 百分比	% Taught Postgraduate 修課式研究生 百分比	% Research Postgraduate 研究式研究生 百分比	% All Levels 全部課程 百分比
Mainland China 中國內地	462	1,232	45	1,739	88%	99%	58%	94%
Other Asian Countries/ Regions 其他亞洲國家	55	3	12	70	11%	0%	16%	4%
USA/Canada/UK/ Australia/New Zealand 美國/加拿大/英國/ 澳洲/新西蘭	2	4	-	6	0%	0%	-	0%
European Countries/ Regions Other Than the UK 英國以外的歐洲國家	4	-	4	8	1%	-	5%	0%
The Rest of the World 其他	-	9	16	25	-	1%	21%	1%
All Regions 總計	523	1,248	77	1,848	100%	100%	100%	100%

Note: Some percentages do not add up to 100% owing to rounding
 註： 個別項目的百分比經尾數調整，合計後與總數略有差距



UG Students' Global Learning Experience 2021 / 2022 (As of 31 Aug 2022)*

2021 / 2022 年度本科生環球學習經歷 (截至2022年8月31日)*



* Including Physical and Virtual Semester Exchange, Short-term Summer and Winter Programmes
包括實體及線上學期交流、短期暑期和冬季課程

GRADUATE PROFILES

畢業生數據

Number of Graduates of All Programmes 2020/ 2021

2020 / 2021 年度所有課程的畢業生人數

Faculty 學院	Undergraduate 本科生	Taught Postgraduate 修課式研究生	Research Postgraduate 研究式研究生	All Levels 全部課程
Arts 文學	250	51	18	319
Business 商學	211	323	7	541
Social Sciences 社會科學	179	164	9	352
School of Graduate Studies 研究生院*	-	146	-	146
All Faculties 全校學院合計	640	684	34	1,358

* Figure includes the TPg programme jointly offered with LIFE
人數包括與嶺南大學持續進修學院合辦的修課式研究生課程

Distribution of International Graduates (Based on Nationality) 2020 / 2021

2020 / 2021 年度國際畢業生（以國籍釐定）分佈人數

Region 地區	Undergraduate 本科生	Taught Postgraduate 修課式研究生	Research Postgraduate 研究式研究生	All Levels 全部課程	% Undergraduate 本科生 百分比	% Taught Postgraduate 修課式研究生 百分比	% Research Postgraduate 研究式研究生 百分比	% All Levels 全部課程 百分比
Mainland China 中國內地	60	588	12	660	87%	97%	44%	94%
Other Asian Countries/ Regions 其他亞洲國家	6	4	7	17	9%	1%	26%	2%
USA/Canada/UK/ Australia/New Zealand 美國/加拿大/英國/ 澳洲/新西蘭	2	1	1	4	3%	0%	4%	1%
European Countries/ Regions Other Than the UK 英國以外的歐洲國家	-	5	2	7	-	1%	7%	1%
The Rest of the World 其他	1	11	5	17	1%	2%	19%	2%
All Regions 總計	69	609	27	705	100%	100%	100%	100%

Note: Some percentages do not add up to 100% owing to rounding

註：個別項目的百分比經尾數調整，合計後與總數略有差距

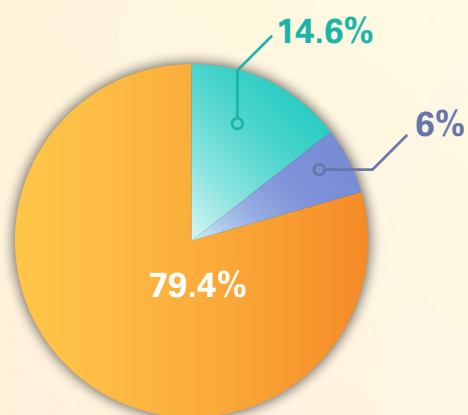


Prospect of Full-time Graduates

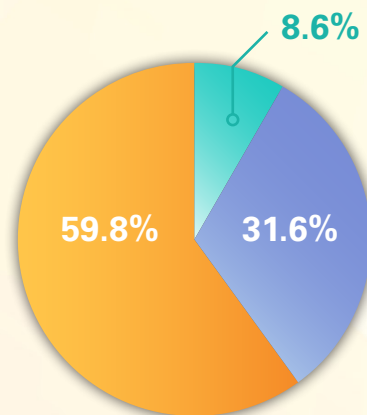
全日制畢業生前途

(% distribution based on Employment Survey as of Dec 2021)

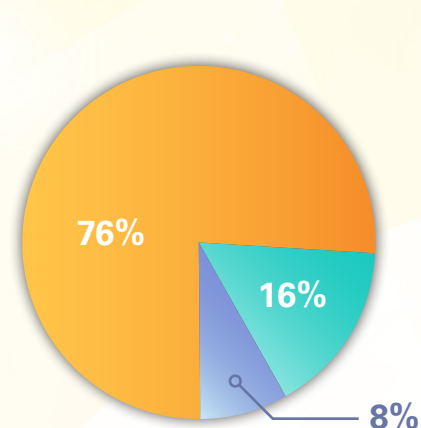
(根據二零二一年十二月所作調查的就業情況百分比)



Bachelor's Degree
學士學位畢業生



Taught Postgraduate
修課式畢業生



Research Postgraduate
研究式畢業生

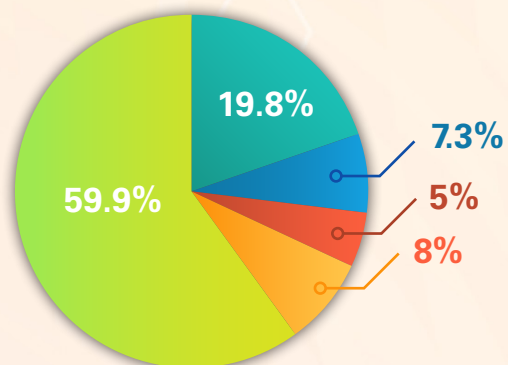


First Employment of Full-time Graduates by Employment Sector

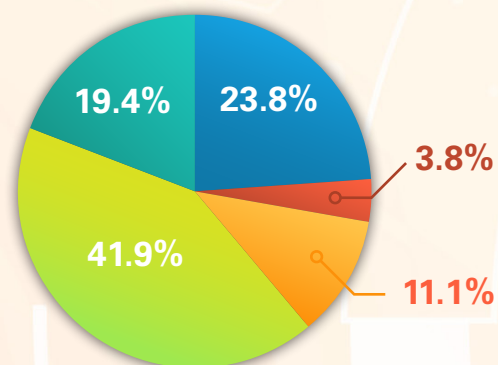
全日制畢業生首份工作的受僱界別

(% distribution based on Employment Survey as of Dec 2021)

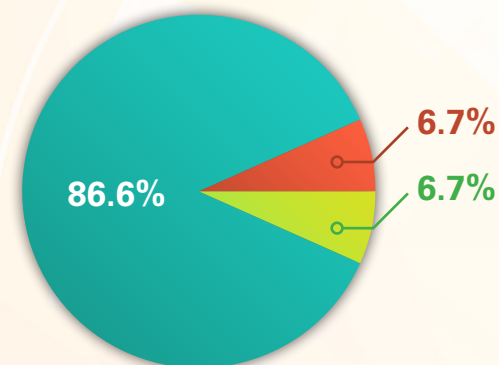
(根據二零二一年十二月所作調查的就業情況百分比)



Bachelor's Degree
學士學位畢業生



Taught Postgraduate
修課式畢業生



Research Postgraduate
研究式畢業生



EXCHANGE OPPORTUNITIES 2021 / 2022

(As of 31 Aug 2022)

2021 / 2022 年度交流機會

(截至2022年8月31日)

Exchange Statistics

交換生人數統計



229

No. of Inbound Exchange Students
(Including Physical and Virtual
Student Exchange Programmes¹)

外來交換生人數
(包括實體及線上交換生計劃¹)



365

No. of Outbound Exchange Students
(Including Physical and Virtual Semester Exchange,
Short-term Summer and Winter Programmes^{1,2})

外出交換生人數
(包括實體及線上學期交流、短期暑期和冬季課程^{1,2})



53%

Student Exchange Rate for Students Who Joined Us as
Freshmen and Exchanged Out in Their 3rd or 4th Year³

第三及第四年級的外出交換生
佔第一年學士學位課程取錄學生人數之百分比³



242

Number of Outbound Students
Receiving Scholarships and/or
Financial Support

獲發獎學金及/或資助的外出交換生人數



66.3%

(242/365)

% of Outbound Students Receiving
Scholarships and/or Financial Support out of
Total Number of Outbound Students

獲發獎學金及/或資助的外出交換生佔
外出交換生人數之百分比

Remarks:
註:

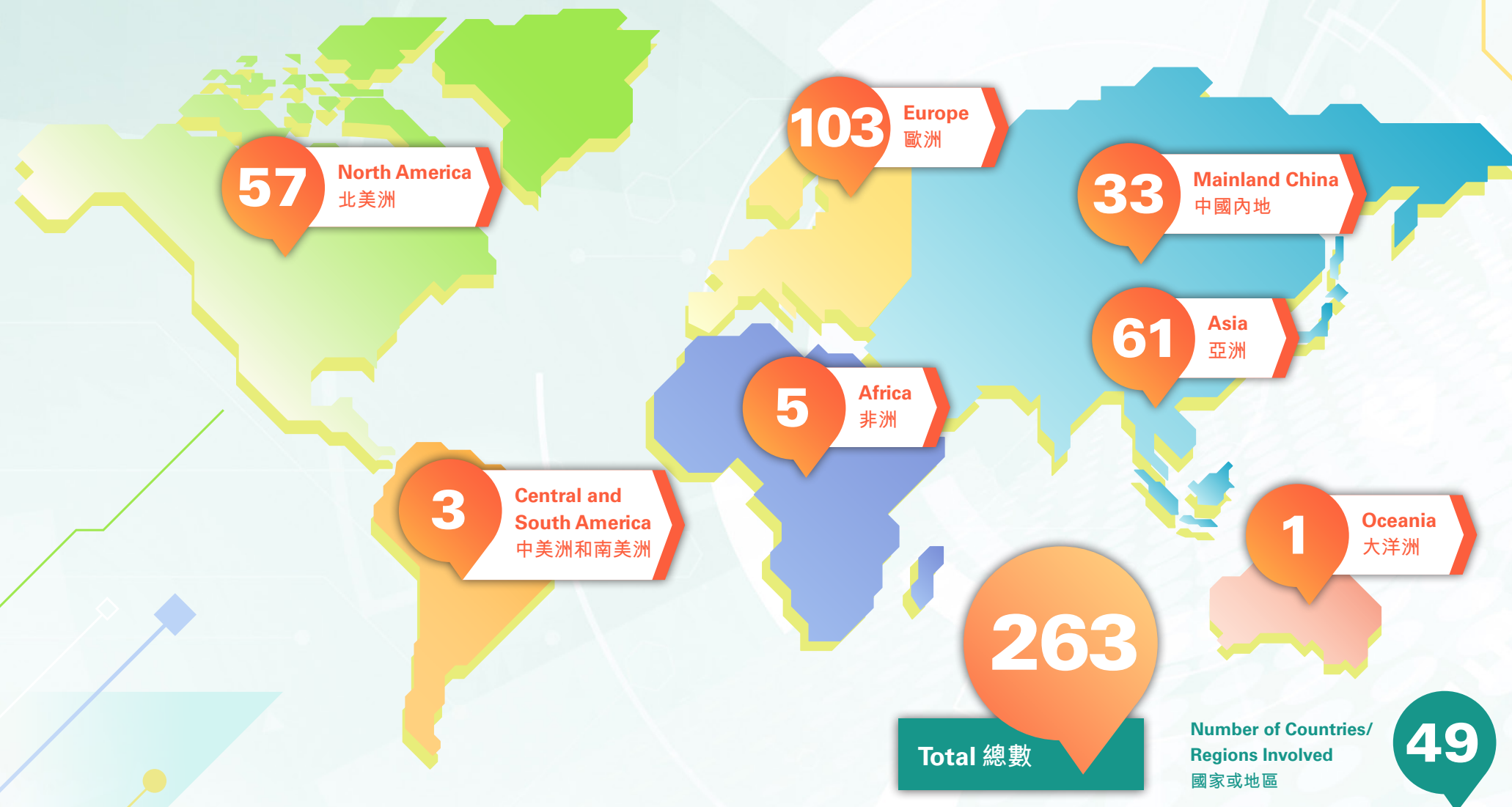
1. The student exchange programmes were seriously affected by the COVID-19 global pandemic
交換生計劃受到2019新型冠狀病毒全球疫情嚴重影響
2. Both credit-bearing and non-credit-bearing short-term summer and winter programmes are included
暑期及冬季課程包括計算學分和不計算學分兩類
3. Only first-year-first-degree (FYFD) students who exchanged out in their 3rd and 4th year are included in this student exchange rate
只包含於第三及第四年級到外地交流的第一年學士學位課程學生

Student Exchange Partners

合作伙伴

263 Exchange Partners in 49 Countries/ Regions

遍佈49個國家或地區的263所交流學院



COMMUNITY SERVICES AND SERVICE-LEARNING 2021 / 2022

2021 / 2022 年度社區服務及服務研習

Students Engaged in Community Services 學生的社區服務

Number of Programmes 計劃數量	167
Total Number of Participants Engaged in Community Services 參與社區服務的總人數	3,563
Number of Full-time UG Students 全日制本科生人數	2,888
Number of Full-time UG Students Engaged in Community Services 全日制本科生參與社區服務的人數	1,875
% of Full-time UG Students Engaged in Community Services 全日制本科生參與社區服務的百分比	64.9%

Number of Service-Learning (Graduation Requirement) and Community Services Programmes Offered 服務研習 (畢業要求) 及社會服務計劃的數量

Community Services 社區服務	Number of Programmes 計劃數量	Number of Participants 參與人數
Service-Learning and Research Scheme Offered by Office of Service-Learning 由服務研習處籌辦的服務研習計劃	106	1,062
Community Services Training Session Organized by Office of Student Affairs 由學生事務處籌辦的社會服務培訓	23	1,689
Community Services Programme Organized by Office of Student Affairs 由學生事務處籌辦的社會服務計劃	8	164
Community Service Project Organized by External Organizations 校外義工服務	15	334
Community Service Project Organized by Departments/Student Societies/Clubs 由學系/學生組織/學會籌辦的社會服務	15	314
Total 總計	167	3,563

Number of Programmes and Participants Organized by Office of Service-Learning

服務研習處籌辦的計劃數量和參與人數

Service-Learning (S-L) 服務研習	Number of Programmes 計劃數量	Number of Participants 參與人數
Credit-bearing Courses with S-L Elements Provided by Responsible Faculties and Unit 由負責學院及單位提供的服務研習學分課程	101	1,041
Faculty of Arts 文學院	16	335
Faculty of Business 商學院	22	328
Faculty of Social Sciences 社會科學院	53	251
School of Interdisciplinary Studies 跨學科學院	6	61
Office of Service-Learning 服務研習處	4	66
Overseas and virtual overseas S-L Programmes 海外及虛擬海外服務研習計劃	5	21
Total 總計	106	1,062

Number of Beneficiaries and Service Hours (Office of Service-Learning)

受益人數及服務時數 (服務研習處)

Type of Service Targets 類型	Number of Beneficiaries 受益人數	Number of Service Hours 服務時數
The Public 公眾人士	15,655	14,262.0
Elderly 長者	2,993	4,206.5
Disabled/ Physically Handicapped Persons 殘疾人士	2,150	1,128.5
Youth 青年	1,850	2,788.0
Poverty 貧困人士	1,240	1,503.5
Ethnic Minorities 少數族裔	1,010	7,394.0
Children 兒童	905	2,621.0
Social Enterprise 社會企業	660	4,473.0
Women 婦女	500	849.5
Work for the Agency Itself 機構本身	301	981.0
Total 總計	27,264	40,207

LINGNAN ENTREPRENEURSHIP INITIATIVE (LEI) 2021 / 2022

嶺大創業行動 2021 / 2022



 **5,206** Total Beneficiaries
總受益人次

 **2,888**
Students Engagement
學生參與 (人次)


 **65**
Faculty Engagement
老師參與 (人次)

 **44**
I & E Partners
雙創合作夥伴

 **5322.5 hours**
Hours of Incubation
初創孵化時數

 **Incubated 18 Start-up projects and social enterprises**
成功孵化18家初創企業及社會企業

 **Developed two inventions:
CREW Wheelchair, Air-Purifier Machine
for Sub-divided Households Version 3.0**
2項人道科技發明：輪椅把手感應系統，
劏房清新機 3.0 版本

 **Organized more than 25 Workshops on
Design Innovation**
舉辦超過25個設計創新工作坊

RESEARCH & KNOWLEDGE TRANSFER PROFILES

研究及知識轉移概覽

New GRF, ECS & HSSPFS Funds 2022 / 2023

2022 / 2023 年度新增的 GRF, ECS 及 HSSPFS 研究資金

Research Grants Council 研究資助局	HK\$ '000 港元 (千)
General Research Fund (GRF) 優配研究金	9,678
Early Career Scheme (ECS) 傑出青年學者計劃	5,791
Humanities and Social Sciences Prestigious Fellowship Scheme (HSSPFS) 人文學及社會科學傑出學者計劃	494
Total 總額	15,963

Success Rates of GRF & ECS Applications 2022 / 2023

2022 / 2023 年度申請 GRF及ECS 的成功率

	Lingnan 嶺南大學	Sector-wide 整個界別
General Research Fund (GRF) 優配研究金		
Business Studies Panel 商科學科組別	54%	43%
Early Career Scheme (ECS) 傑出青年學者計劃		
Humanities and Arts Subject Discipline 人文學及藝術科目	59%	40%



Research Outputs by Areas 2021 / 2022

2021 / 2022 年度各範籌研究成果



Note: by weighting, students included
 註: 按所佔比例計算, 包括學生在內

Contract Value of Other External Funds for Research and Knowledge Transfer 2021 / 2022 (On-going projects)

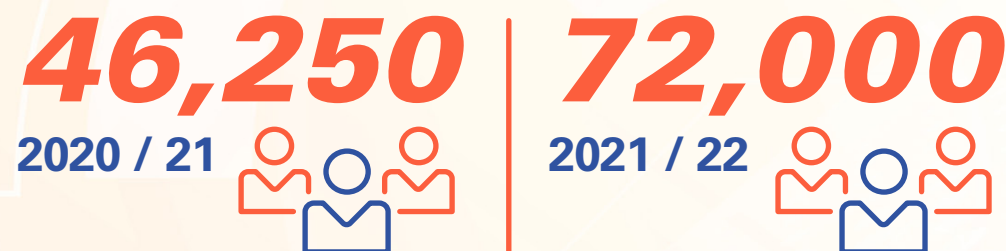
2021 / 2022 年度其他校外資金所支持的研究及知識轉移項目合約價值

	HK\$ '000 港元 (千)
Public Policy Research Funding Scheme 公共政策研究資助計劃	1,460
Consultancy Contract Value 顧問工作合約價值	14,245
Contract Research Contract Value 合約研究合約價值	20,283
Social & Community Projects Contract Value 社會項目合約價值	118,273
Total 總額	154,261



Number of Beneficiaries in Knowledge Transfer and Community Activities

知識轉移及社會項目受惠者人數



FINANCE

財政

Income and Expenditure 2021 / 2022

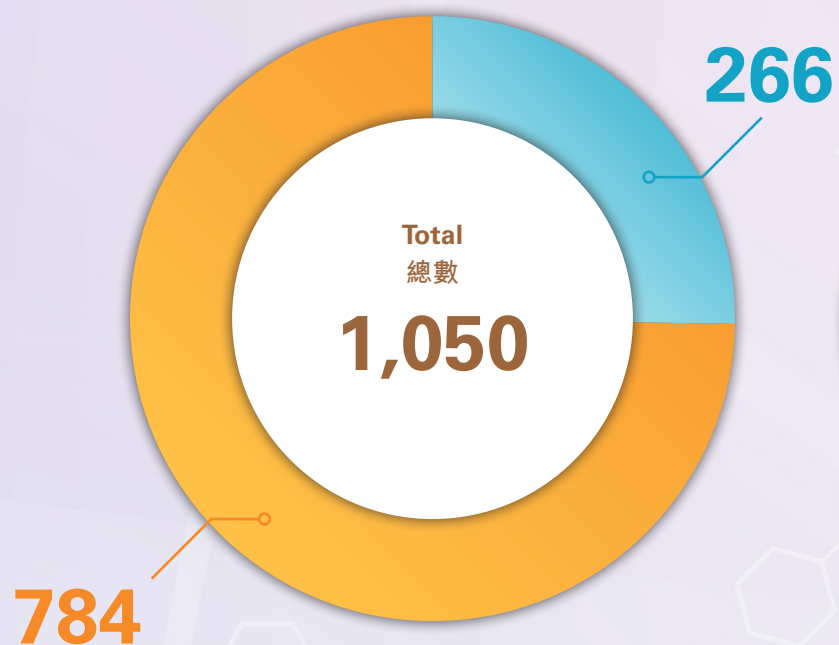
2021 / 2022 年度收支

Income 收入	HK\$ 港元	% 百分比
Government Subventions 政府補助撥款	538,994,753	57.7%
Tuition, Programmes and Other Fees 學費、課程及其他收費	477,629,580	51.1%
Interest and Investment Income 利息及投資收益	(155,981,184)	-16.7%
Donations and Benefactions 外界捐助	34,966,999	3.7%
Auxiliary Services 輔助服務	33,056,940	3.5%
Other Income 其他收益	6,170,802	0.7%
Total Income 總收入	934,837,890	100%

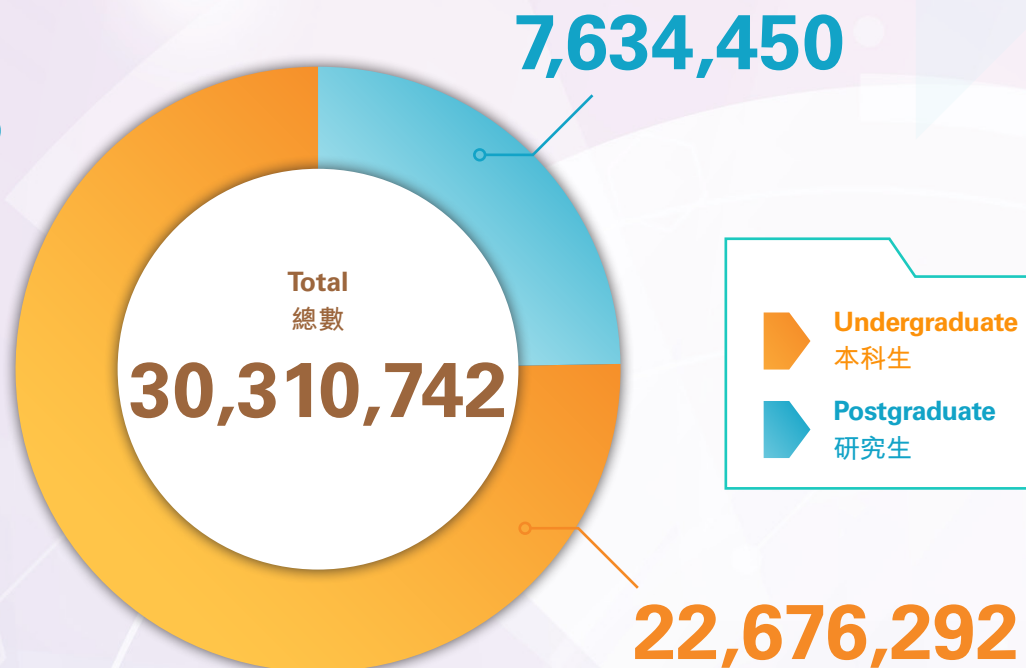
Expenditure 支出	HK\$ 港元	% 百分比
Learning and Research 學習及科研	637,013,702	63.1%
Instruction and Research 教學及科研	486,616,067	48.2%
Library 圖書館	38,763,432	3.8%
Central Computing Facilities 中央計算設施	48,514,397	4.8%
Other Academic Services 其他教學設施	63,119,806	6.3%
Institutional Support 教學支援	372,618,283	36.9%
Management and General 管理及一般項目	95,559,974	9.5%
Premises and Related Expenses 校舍及有關開支	163,920,922	16.2%
Student and General Education Services 學生及一般教育設施	110,920,650	11.0%
Other Activities 其他活動	2,216,737	0.2%
Total Expenditure 總支出	1,009,631,985	100%

SCHOLARSHIPS AND PRIZES 2021 / 2022

2021 / 2022 年度獎學金及獎項



Number of Scholarships and Prizes* Awarded
獎學金及獎項*頒發數目



Amount of Scholarships and Prizes* Awarded (HK\$)
獎學金及獎項*頒發金額 (港元)



* Include Recognition Scholarships, Entrance Scholarships, Community Service Scholarships and Exchange Scholarships
包括認可獎學金·入學獎學金·社會服務獎學金和交流獎學金

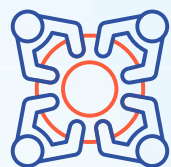


LIBRARY RESOURCES 2021 / 2022

2021 / 2022 年度圖書館資源

Library Collection 圖書館藏書	
Total Volumes in Library 總藏書量	469,042
E-books 電子書數目	1,648,210
Printed Journal Titles 印刷期刊數目	392
Electronic Journal Titles 電子期刊數目	128,280
Electronic Databases 電子資料庫數目	218
AV Material Items 影視資料數目	213,862
Microforms 微縮資料	34,206

Other Library Resources 其他圖書館資源	
Number of Study Spaces 座位數目	1,031
Number of Group Discussion Rooms 小組討論房間數量	11
Number of Individual Rooms 獨立房間數量	11
Number of Open-Access Workstations 電腦工作站數量	87
Weekly Service Hours 每週服務時間	76



133,901

Number of Users during the Year
使用人數



COMPUTING AND NETWORK RESOURCES

電腦及網絡資源

Computing and Network Resources 2021 / 2022

2021 / 2022 年度電腦及網絡資源



9,725

Number of Wired Network Access Points
網絡連點數目



2,440

Number of Wireless Network Access Points
無線連網點數目



14,215 Mbps

Total Bandwidth for Direct Connection to
the Internet and Research / Education Networks
直接連繫互聯網及研究 / 教育網絡

SPACE 土地應用

Distribution of Space by Categories Based on Total Usable and Accessible Floor Area (as of 30 Jun 2022)

各類可用地面積總計 (截至2022年6月30日)

Category 類別	Floor Area (in sq. m) 面積 (平方米)	% 百分比
Academic Space 教學用地	17,836	13.7%
Central Libraries 中央圖書館	7,432	5.7%
Central Administration and Maintenance 中央行政及維修部門	22,051	17.0%
Student and Staff Amenities 師生文娛設施	7,784	6.0%
Sports Facilities 體育設施	25,365	19.5%
Student Halls of Residence and Visitor Quarters 學生宿舍及教職員宿舍	45,896	35.3%
Others 其他用途	3,615	2.8%
All Categories 總計類別	129,980	100%

* Figures do not add up due to rounding
由於四捨五入，數字總和與相對的總計略有出入

Halls and Student Residences 學生宿舍

Number of Hostel Places (as of 30 Jun 2022)
宿位數目 (截至2022年6月30日)

Existing
現有宿位 **2,600**



The background features a complex geometric pattern of overlapping translucent shapes in various shades of blue and yellow. Several thin, colored lines (purple, orange, blue, white) are scattered across the page, some ending in small diamond or circle markers. The overall aesthetic is modern and technical.

www.LN.edu.hk