



A Guide to Campus Life

2023-24





Contents

Welcome Message	2
Liberal Arts Education	3
Achieving United Nations Sustainable Development Goals (SDGs)	4-5
Useful Contacts	6-7
Whole-Person Development	8-9
Certificate of Awards and Participation (CAP)	10
Preparing for Your University Life	
New Student Orientation (NSO)	11-13
Learning Enhancement	
Integrated Learning Programme (ILP)	14-15
Service-Learning (S-L): Make an Impact	16-17
Student Exchange Programmes (SEP)	18-19
Outside Classroom Learning	
Hostel Life	20-21
Community Services	22-23
Physical Education, Sports Teams and Activities	24-27
Student Societies	28-29
University Teams	30-31
Mentoring Programmes	32-33
Student Development Awards	34-35

Language Learning Opportunities

Lingnan Language Enhancement Initiative (L ² EI)	36
English and Additional Languages	37

Career Preparation

Career Advising Services	38-39
--------------------------------	-------

Support Services

Counselling Services and Personal Development	40-41
Wellness Programmes	42-43
Support for International and Mainland Students	44-45
Support for Students with Special Educational Needs	46-47
Financial Assistance and Scholarships	48-49
Student Health Services	50
Catering Services	51
Communication Channels	52

Important Information You Must Read

Lingnan University Guidelines for Learning	53-54
Plagiarism	55-56
Sexual Harassment	57
Academic Regulations for Undergraduate Programmes	58
General Advice	58-59
Anti-fraud Information	60-61
Campus Map	62-63



Welcome Message

Dear students,

Welcome to Lingnan University!

As a global leader in quality education*, we strive to bring to you supreme whole-person learning experience so as to facilitate your attainment of desirable development and personal goals. “A Guide to Campus Life 2023-24” showcases an array of programmes, services, facilities and support specially designed for you to get a taste of the Lingnan University’s distinctive liberal arts education.

Besides academic pursuit, you are highly encouraged to participate in a vast range of activities such as serving as an office-bearer of different student societies to sharpen your leadership skills, taking part in community services to exert a positive impact to society, and getting prepared for your future career. Residential education, one of the hallmarks of student development, also provides a favourable living-learning community for you to maximise your engagement in multi-cultural, social innovation, and global humanistic aspects.

Throughout your years at Lingnan University, the Office of Student Affairs will offer and introduce to you bountiful opportunities, including the aforesaid ones, for out-of-classroom learning. We aim to set the path to nurture responsible and caring leaders who will play spearheading roles in improving the well-being of the entire human race. To this end, we endeavour to help you plan ahead and seize every chance to equip yourself, to capably address novel situations and unstructured problems, and to communicate effectively in academic and social settings to achieve all-round excellence.

I hope you will enjoy the new chapter of living on this mutually supportive campus. Rest assured you are in good hands with our trustworthy team of professional staff members and all the enthusiastic peer mentors!

Irene Ng
Director of Student Affairs

* *Lingnan University ranks 2nd worldwide in “Quality Education” in the Times Higher Education (THE) Impact Rankings 2023*



Liberal Arts Education

Liberal arts education at Lingnan University aims to instil a sense of civic duty in our students and to cultivate skills, competences and sensibilities that enable graduates to pursue their goals in a rapidly changing social, cultural and economic environment. Lingnan graduates will have breadth and depth of vision, the desire and capacity for public service, an awareness of the complexities that characterise enduring human dilemmas, and, accordingly, maturity of judgement. Excellent as leaders and employees, Lingnan graduates will be the beneficiaries of a multi-dimensional approach to learning.



SUSTAINABLE DEVELOPMENT GOALS



Achieving United Nations Sustainable Development Goals (SDGs)

In 2015, the United Nations adopted 17 Sustainable Development Goals (SDGs) as the focal point of a global campaign to end poverty, protect the planet, and ensure that every person in the world is in a position to enjoy peace and prosperity by 2030.

As a caring liberal arts university and global leader in Quality Education and Impactful Research, Lingnan University is dedicated to reaching and promoting the SDGs set by the United Nations for the betterment of humankind.

Lingnan's commitment to achieving the SDGs is demonstrated in its research, programmes, teaching and learning, knowledge transfer activities, social engagement projects, entrepreneurship initiatives, and corporate governance as well as administration.

Website:
<https://www.LN.edu.hk/lu-sdgs/>



Useful Contacts

Emergency	Telephone
Lingnan Emergency Hotline (24 Hours)	2616 8000
24-hour Counselling Hotline for Lingnan Students managed by the Christian Family Service Centre	2616 8866
Tuen Mun Hospital	2468 5111
Tuen Mun Police Station	3661 1670

* In case of serious condition, please dial 999 for immediate assistance at the same time to avoid delay in treatment.

Administrative & Services Units	Telephone
Campus Support Office (CSO)	2616 7134
Finance Office (FO)	2616 8888
Information Technology Services Centre (ITSC)	2616 7995
Library	2616 8586
Lingnan Counsellors during Office Hours	2616 7024
Office of Global Education (OGE)	2616 8990
Office of Service-Learning (OSL)	2616 8073
Office of Student Affairs (OSA)	2616 7309
Registry	2616 8750
Sports Complex	2616 7147
Teaching and Learning Centre (TLC)	2616 7117


Amenities	Telephone
Tai Ning Hall – Canteen (Fast Food)	2328 6990
Lingnan House (Chinese Restaurant)	2616 7990
Cafe	2328 6990

Student Hostels				
Hostel	Commonly known as	Warden & Senior Tutor	Contact No	Security Counter
William M W Mong Hall The Bank of East Asia Hall	A	Prof Padmore Adusei AMOAH	2616 8037	2616 7640
		Ms Nancy Ning LU	2616 7271	
Tsung Tsin Association Hall Fok Cho Min Hall	B	Prof Suntong QI	2616 8525	2616 7641
		Mr Chad Wing-fung CHAN	2616 8074	
Chung Shun Yee Min Hall	C	Prof Chi-pang LAU	2616 7483	2616 7642
		Mr Shiau-aun WONG	2616 8765	
Lam Woo Hall	D	Prof Dickson Chak-kwan CHAN	2616 7420	2616 7643
		Prof Genghua HUANG	2616 7896	
The Jockey Club Hall	E	Prof Dong-hui LI	2616 7311	2616 7644
		Ms Snowie Suet-yi WONG	2616 7459	
The Jockey Club Hall	F	Dr Victor Bo ZHOU	2616 7803	2616 7645
		Ms Vincy Wing-yin AU	2616 8339	
The Jockey Club New Hall	G	Prof Chunmei DU	2616 7854	2616 8708
		Ms Zelda Pik-man LAU	2616 8856	
The Jockey Club New Hall	H	Prof Mark Andrew HAMPTON	2616 7402	2616 8708
		Ms Shan-shan MAN	2616 7449	
Wong Hoo Chuen Hall	WHC	Prof Jonathan FONG	2616 7081	2616 8706
		Ms Nans Wing-yee LEUNG	2616 7365	
Wu Jieh Yee Hall	WJY	Prof William Guanglin LIU	2616 8327	2616 8706
		Mr Eric Chi-ping TSUI	2616 7284	

Whole-Person Development

Development Programmes Complementary to Academic Studies

Freshmen >>>> Happy Students >>>> Profile of Ideal Graduates



Preparation for University Life

- New Student Orientation (NSO)
- Integrated Learning Programme (ILP)
- Exploration Week



Learning Enhancement

- The Leader in Me
- Integrated Learning Programme (ILP)
- Peer Mentor Programme
- Campus-wide Activities
- Student Exchange Programmes (SEP)



Outside Classroom Learning & Leadership Enhancement

- Hostel Life
- Community Services
- Physical Education & Sports Activities
- Student Activities (Student Societies & University Teams)
- Leadership Enhancement Programme (LEP)
- Leadership Mentoring Programme (LMP)



Career Preparation

- Career Education & Development Programmes
- Career Empowerment Programme (CEP)
- Pre-employment & Skills Training
- Internship Programmes
- Job Information Services
- Career Advising
- Lingnanian Executive Mentoring Programme (LEMP)



Liberal arts education at Lingnan University aims to instil a sense of civic duty in our students and to cultivate skills, competences and sensibilities that enable graduates to pursue their goals in a rapidly changing social, cultural and economic environment. Lingnan graduates will have breadth and depth of vision, the desire and capacity for public service, an awareness of the complexities that characterise enduring human dilemmas, and, accordingly, maturity of judgement. Excellent as leaders and employees, Lingnan graduates will be the beneficiaries of a multidimensional approach to learning.

Student Services – Counselling Service, Physical & Mental Wellbeing, Financial Assistance, Scholarships, Health Services, Catering Services, Support for SEN Students, Support for Non-local Students and Communication Channels

Certificate of Awards and Participation (CAP)

Complement the academic transcript by building students' co- and extra-curricular portfolio!

- Recording your achievements such as awards, contributions to the University, attendance of Integrated Learning Programme (ILP), etc.

CAP shows the following records of each student:

Awards

- Participation in cultural and sports activities
- Student leadership development and exchange programmes
- Outstanding services
- Training courses and programmes

ILP Course Attendance

- All the ILP programmes, workshops, activities and courses attended

Contributions to the University

- Office-bearers of student bodies and members of university teams
- Organisers of major campus events
- Student Representatives in university committees
- Student Ambassadors

Fulfilment in Requirements

- Attendance in Awards Presentation Ceremony and Sports Day

Enquiries:

Mr Kyle KWOK

Tel: 2616 7024

Email: kylekwok@LN.edu.hk

Website: <https://www.LN.edu.hk/osa/co-curricular-programmes/cap>

Ms Mabel MAK

Tel: 2616 7021

Email: makmc@LN.edu.hk

A "Student Copy" is now available for your own printing by logging in to the "myLingnan Portal". OSA will issue to you an "Official Copy" of CAP when you graduate. (An "Official Copy" is a copy with the signature of the Director of Student Affairs and office chop while the "Student Copy" is a copy without the signature and office chop. An "Official Copy" will only be sent sealed direct to the company or institution you apply for employment or further studies.)

Preparing for Your University Life

New Student Orientation (NSO)

What is university life? NSO provides you with some insights into, and prepares you for a diversified and substantial university life!



NSO helps you

- Adjust to the university life efficiently and effectively
- Acquire the necessary information to prepare for the commencement of your learning journey at the university
- Network and reap the benefits from the experiences of senior students, staff and alumni regarding university life
- Set goals for university life success and whole-person development
- Nurture your pride of becoming a Lingnanian



Two years went by in the blink of an eye, I have become a big sister to take care of my brothers and sisters in their freshmen years and to serve as a resource as they navigate the challenges of university life. Serving as a peer mentor has been a truly enriching and blissful experience for me. My two mentees from Nepal and Hong Kong are nice juniors to connect with. The diversity of the programme offers is really appealing. I couldn't be more grateful for Lingnan, allowing me to use my motherly skills to the fullest extent to the freshmen.

LAM Yuen Lam Thuy

(Year 4 student, BA-Contemporary English Studies) //



Enquiries:

Ms Sita WONG

Tel: 2616 7025

Email: sita@LN.edu.hk

Website: <https://www.LN.edu.hk/osa/new-students/nso>

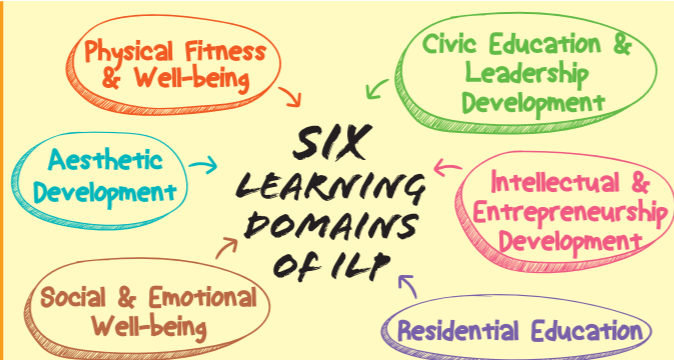


Learning Enhancement

Integrated Learning Programme (ILP)

Help students to unlock potential, boost confidence and achieve success!

- One of the signature co-curricular programmes and graduation requirements
- Over 400 activities each year
- Enjoy a university life from the transitional process of new student to becoming an advanced learner
- For details of the ILP, please refer to the ILP website at <https://www.LN.edu.hk/osa/ilp>



Minimum ILP Unit Requirements Upon Graduation

ILP Learning Domains	Minimum ILP Unit Requirements		
	Admittees on a 4-year programme	Senior Year Places Admittees (designated as Year 2)	Senior Year Places Admittees (designated as Year 3)
Civic Education & Leadership Development	5	5	5
Intellectual & Entrepreneurship Development	5	5	5
Physical Fitness & Well-being	5	5	5
Social & Emotional Well-being	5	5	5
Aesthetic Development	5	5	5
Residential Education	5	5	5
Free Electives (Any Learning Domain) ^{1,2}	30	15	-
New Student Orientation (NSO) ³	15	15	15
Total Unit Requirements:	75	60	45

¹ Students who have participated in and completed an approved Student Exchange Programme (SEP) can acquire an exemption of 7.5 ILP units under Free Electives. For details, please contact Office of Global Education.

² Once students have met the requirement of each learning domain, the additional units will be counted under Free Electives.

³ If students cannot participate in or complete the NSO programme, they are required to obtain ILP units under Free Electives.

Suggested ILP Study Plan

	Year 1	Year 2	Year 3	Year 4	Minimum ILP Unit Requirements
Admittees on a 4-year programme	15 (NSO [^]) + 15	15	15	15	75
Senior Years Places Admittees (designated as Year 2)	--	15 (NSO [^]) + 15	15	15	60
Senior Years Places Admittees (designated as Year 3)	--	--	15 (NSO [^]) + 15	15	45

[^] NSO refers to New Student Orientation

Enquiries:

Mr Jeffy LAU

Tel: 2616 7403

Email: jeffylau@LN.edu.hk

Ms Crystal SO

Tel: 2616 7367

Email: clso@LN.edu.hk

Mr Bill YUEN

Tel: 2616 7411

Email: billyuen@LN.edu.hk

General Enquiry

Tel: 2616 7411

Email: ilpcom@LN.edu.hk

Website: <https://www.LN.edu.hk/osa/ilp>

Facebook: LingnanILP

Instagram: lingnanilpteam

Service-Learning (S-L): Make an Impact!

Service-Learning (S-L) gives you the opportunity to make an impact by connecting academic knowledge to meaningful community projects. It is an adventure that will give you practical skills and mindsets for changing the world you live in.

- Participate in local and overseas S-L projects with community partners
- An experiential learning opportunity where you will apply classroom knowledge to complex real-world social issues
- Participated by more than 900 students every year
- You get to choose from a variety of S-L projects such as:

1. Participating in a beach clean-up and conducting a waste audit of the collected trash



3. Designing posters and pamphlets to reach out to sub-divided flat tenants on tenancy-related information



2. Documenting stories of segments of Hong Kong (e.g. old snack shop owners) in clips and life story books



4. Leading inter-generational activities to shed light on social issues around Hong Kong elderly & youths



5. Exciting overseas S-L opportunities in Summer & Winter Academies

6. Providing business consultancy services to early stage start-ups

7. Providing translation services to NGOs and startups

8. The list goes on....

S-L GRADUATION REQUIREMENT (SLR)

You need to pass at least one academic course with S-L element, perform 30 hours of service, and submit all required documents to fulfil this graduation requirement.

Completed 30 hours S-L Experience (Including training and service hours)



+

Completed S-L Documents Eg. Pre-test and Post-test Questionnaire



+

Passed the course with S-L Elements



=

Fulfilled the SLR

Enquiries:

Office of Service-Learning
 Room 101, 1/F, B. Y. Lam Building
 Tel: 2616 8073
 Email: osl@LN.edu.hk
 Website: <https://www.LN.edu.hk/osl>
 Instagram: [lingnanosl](https://www.instagram.com/lingnanosl)

Student Exchange Programmes (SEP)

Grasp this once-in-a-lifetime learning experience to study abroad in U-life!

- Over 260 exchange partners in over 50 countries/ regions:
 - Africa: Cote d'Ivoire, Egypt, Morocco, South Africa
 - Asia Pacific: Australia, India, Indonesia, Israel, Japan, Kazakhstan, Korea, Mainland China, Malaysia, Pakistan, Taiwan, Thailand, United Arab Emirates, the Philippines
 - Europe: Austria, Belgium, Croatia, Czech Republic, Denmark, Estonia, Finland, France, Germany, Hungary, Italy, Latvia, Lithuania, Norway, Poland, Portugal, Romania, Russia, Slovakia, Slovenia, Spain, Sweden, Switzerland, Türkiye, the Netherlands, the United Kingdom
 - The Americas: Argentina, Canada, Chile, Ecuador, Mexico, Peru, the United States of America
- Two rounds of applications for one-semester exchange opportunities (in September/ October and February/ March)
- Short-term Summer/ Winter programmes are on offer
- Air ticket sponsorships, exchange scholarships and means-tested/ non-means-tested subsidies are available for eligible programmes



// *Studying abroad, which is totally different from travelling, not only taught me to be self-reliant, but also enabled me to experience different cultures, and encouraged me to move forward. I gained knowledge and skills, and at the same time I was motivated to keep moving forward. The exchange journey indeed made me grow tremendously.*

CHEUNG Wing Ki

(Year 4 student, BBA-Marketing; went on exchange to Kyonggi University in Korea in Fall 2022) //

// *Participating in the Student Exchange Programme gave me a once-in-a-lifetime opportunity to travel to different countries and meet people from diverse cultural backgrounds. This experience was absolutely amazing and shaped me into a better person.*

CHAN Chin Ho

(Year 3 student, BA–Contemporary English Studies; went on exchange to Faculty of Humanities, University of Southampton in the United Kingdom in Spring 2023) //



Enquiries:

Office of Global Education

AD208/1, 2/F, Wong Administration Building

Tel: 2616 8990

Email: oge@LN.edu.hk

Website: <https://www.LN.edu.hk/oge>

Instagram: lingnanoge

Outside Classroom Learning

Hostel Life

Offer a quality whole-person education and residential education to students to develop their strengths in our Living-Learning Community

Hostels as Living-Learning Community

- Foster students' intellectual development and horizons, and encourage immense interactions with hostel residents
- Build up soft skills such as independence, interpersonal skills, sense of community and responsibility through living with roommate(s), floor mates and community life in hostels
- Create sense of belonging to their own hostel and Lingnan

Global Perspectives and Cultural Exchange

- Enable students to experience the multi-cultural hostel life with non-local and exchange students around the world
- Enhance students' language proficiency, cultural appreciation and international perspective, through increasing social interaction among local, non-local and exchange students in hostels



Enquiries:

Mr Tim CHUNG
Tel: 2616 7022
Email: timchung@LN.edu.hk

Ms Tequila LEUNG
Tel: 2616 7368
Email: longnileung@LN.edu.hk

Hostel Activities

- ILP programmes organised by Warden's Offices
- Orientation Camps
- Hiking at Tuen Mun Trail: Rainbow Rail
- Hostel Entrepreneurship Laboratory
- Journey of Mindfulness Started from LU
- Green Ambassadors@Student Hostels Programme
- Movie Nights and Reading Party

Financial Support to Needy Students

- Students with financial difficulties may apply for deferred payment
- University offers a number of hostel bursaries and scholarships for students to apply



// *Hostel life in Lingnan is a remarkable process to make myself independent as I have to manage everything on my own. Beside schoolmates I met during classes, I made lots of good connections with my hallmates. In fact, most of my close friends are from my same hostel. I joined the Student Hostel Association and organised numerous activities such as orientation camp, annual dinner and hostel singing contest for my fellow hallmates. It is a valuable leadership training opportunity for me and my teammates. Staying in the hostel makes me feel comfortable and safe as we can still enjoy some of our hostel life without any disturbances. Besides, I could concentrate on my academic study when I was staying at the hostel. These are wonderful and fabulous memories in my university life, and I am glad that I chose to live in the student hostel.*



NG Shun Kit Nicholas
(Year 4 student, BBA-Finance) //

Community Services

Provide opportunities for students to serve the community!

Care for Community • See the Connections

With the University's motto "Education for Service", community service is always an integral part of campus life. The University tries every means to provide students with not only opportunities to participate in an active campus life but also experiences to care for the welfare of the community.

Lingnan C♥Connects Programme

- Offer trainings and sharing sessions exclusive to C♥Connects Crew Members
- Provide opportunities for Crew Members to serve the community through structured community service programmes, self-arranged volunteer services and University programmes
- Provide a one-stop "C♥Connects Online Platform for Volunteer Service Record Submission" for Crew Members to input community service records

Come to join us!
Become C♥Connects
Crew Members



Enquiries:

Ms Angie LAU
Tel: 2616 7023
Email: angielau@LN.edu.hk
Website: <https://www.LN.edu.hk/osa/community-services/c.connects>

Structured Community Service Programmes

- LU Service Day
- Orbis Eye Brightening Advocate Programme
- Principal Chan Free Tutorial World – LU Volunteer Teachers Scheme
- Hong Kong Young Ambassador Scheme
- Big Brothers and Sisters Volunteer Service Project
- The Hong Kong Federation of Youth Groups Jockey Club Kin Sang Youth S.P.O.T. – Elderly Autograph Book Project
- Project X
- "Strive for Success" Tuen Mun District Primary Students Award Scheme – A Day at University for Primary School Students
- ... and many more

Community Service Awards

Provide networking opportunities and eye-opening exposures for **OUTSTANDING** Crew Members



// *Participating in community services became an important part of my university life. It provided me with both mental and physical rewards. I could feel that I was less stressed and easier to gain a sense of satisfaction during volunteering. Also, it allowed me to connect with the community and gain a deeper understanding of the district. On the other hand, volunteering was a great way to make new friends. I was thankful to meet so many new buddies. It was a great experience to work together towards a common goal. In addition, volunteering gave me the opportunity to practice and develop my social skills. I was continuously learning how to socialise in diverse surroundings. I was a shy person before, but now I can express myself bravely.*

CHAN Wai Chung Felix
(Year 2 student, BBA-Risk and Insurance Management) //

Physical Education, Sports Teams and Activities

Help students develop a lifelong interest in sports and build up a good physique!

Physical Education Courses and Workshops

- Nearly 100 courses and workshops under the ILP Physical Fitness and Well-being domain each year
- Programmes including ball games, racket games, water sports, dancing, physical fitness, martial arts, yoga and others

Enquiries:

Dr Kam-ming MOK
Tel: 2616 7301
Email: kmmok2@LN.edu.hk



Advocate students' team spirit and sense of belonging!

Sports Teams & Clubs

- More than 40 sports teams and clubs organised by OSA and/ or managed by the Students' Union

Enquiries:

Ms Kit-ling HSIAO
Tel: 2616 8646
Email: kithsiao@LN.edu.hk

Started since academic year 2017-18, "Lingnan University Entrance Scholarships for Elite Athletes" has been awarded to elite athletes pursuing undergraduate studies at Lingnan enrolled through JUPAS or Non-JUPAS admissions.

Entrance Scholarships for Elite Athletes

- Full scholarship covers tuition fee and hostel fee subject to academic performance every year
- The scholarship is renewable annually subject to the attainment of renewal requirement



Enquiries:

Ms Kit-ling HSIAO
Tel: 2616 8646
Email: kithsiao@LN.edu.hk
Website: <https://www.LN.edu.hk/osa/sports/entrance-scholarships-for-elite-athletes>





Do join the University-wide sports events every year!

Sports Activities

- Aquatic Meet
- President's Cup Inter-Hostel Sports Competitions
- Sports Day

Enquiries:

Mr Jason CHAU
 Tel: 2616 7310
 Email: jasonchau@ln.edu.hk
 Website: <https://www.LN.edu.hk/osa/sports>

A wide range of sports facilities for students' use!

Sports Facilities

- Indoor Sports Complex (Fitness Room, Squash Courts, Table-Tennis Room, Tennis Court)
- Jackie Chan Gymnasium (Badminton Courts, Basketball Court, Volleyball Court)
- Tin Ka Ping Swimming Pool
- Pan Sutong Sports Ground (Tennis Courts, Half-Side Basketball Court, Running Tracks, Football Pitch)
- Wofoo Joseph Lee Student Activity Centre

Enquiries:

Tel: 2616 7147
 Website: <https://www.ln.edu.hk/ocdm/facilities/sports>



// *It is my pleasure to be a part of the handball team.*

Lingnan University provides me with a golden chance and a good training environment to pursue my sports career. Training with my teammates and coach has been very enjoyable. I am more than grateful to be one of the sports team members here with all these amazing people!

Stay Motivated, Keep Chasing, and Keep Improving!

CHAN Siu Yin Nick
 (Year 4 student, BBA-Marketing) //

Student Societies

Serve fellow students or community at large; and nurture students' leadership by encouraging them to join student societies as office-bearers.

OSA Support to Student Societies

- Student Activities Fund (SAF)
- Leadership fund for student leaders
- Student amenities
- Leadership Enhancement Programme (LEP)
- Advice and assistance



List of Student Groups in 2023-24

Students' Union

- Press Bureau
- Representative Council

Interest Groups

- Dancing Society
- Drama Society
- Fencing Club
- Judo Club
- Mahjong Society
- Music Society

Programme-based Societies

- Business Administration Society
- Contemporary English Society
- History Society
- Senate of Association of Arts Programme
- Senate of Business Administrative Society
- Senate of Society of Social Sciences
- Society of Philosophy
- Society of Social Sciences

Enquiries:

Ms Nans LEUNG
Tel: 2616 7365
Email: nansleung@LN.edu.hk

Ms Sita WONG
Tel: 2616 7025
Email: sita@LN.edu.hk

Taking part in a student society is an incredibly rewarding experience that allows you to make a positive impact on campus and beyond. You have the opportunity to organise events, create initiatives, and build a community of like-minded individuals who share your passion and goals. However, running a student society also comes with its challenges, such as managing resources, communicating with members, and ensuring that the society remains attractive to students. But ultimately, participating in a student society is a fantastic way to develop leadership skills, build your network, and make a lasting impact on your university experience. Embark on the journey of leadership now and don't miss out the opportunity!

YIP Ka Kit Sam
(Year 3 student,
BA-Contemporary English Studies)

University Teams

Recruitment of University Team members starts in September each year!



Be Bold! Be Awesome! Be a Toastmaster!

Lingnan University Toastmasters Club

- Learn and practise English public speaking in a fun and supportive environment
- Offer tons of activities, contests and workshops

Enquiries:

Mr Edwin FOK
Tel: 2616 7404
Email: edwinfok@LN.edu.hk
Website: <https://lingnanu.toastmastersclubs.org/>

Give a try of the traditional Chinese arts in U-life!

Lion Dance Team and Dragon Boat Team

- Learn and practise the skills for Lion Dance and Dragon Boat
- Offer various opportunities for students to practise and perform on different stages and large-scale events

Enquiries:

Mr Jason CHAU
Tel: 2616 7310
Email: jasonchau@LN.edu.hk

Cultivate students to become good team players!

Sports Team

- Represent the University to take part in local and overseas competitions
- Set targets to achieve the Outstanding Athletes and Outstanding Martial Art Athlete Awards
- Acquire a life-long interest in sports activities

Enquiries:

Ms Kit-ling HSIAO
Tel: 2616 8646
Email: kithsiao@LN.edu.hk

Join the Teams and be the best debater!

Chinese Debate Teams (Putonghua and Cantonese)

- Strengthen students' minds and tongues by formal training
- Take part in various inter-university competitions

Enquiries:

Mr Tim CHUNG
Tel: 2616 7022
Email: timchung@LN.edu.hk



Being a part of the Chinese Debate Team has been an incredible journey, particularly as I have been given the honor of serving as the team captain. The friendship among our members is truly remarkable. Together, we have triumphed over numerous challenges and ultimately emerged as the champion among all universities in the Inter-Collegiate Debate Competition 2022. At the Chinese Debate Team, we wholeheartedly embrace individuals from all backgrounds, regardless of their level of experience. We have fun together, work hard together and win together as a team.

LAM Yuk Sang
(Year 4 student, BBA-Finance)

Mentoring Programmes

Enrich students' education and life experiences by sharing insights between mentors and mentees!

Peer Mentor Programme (PMP)

Linking new students with senior year students for adjustment of U-life!

- Year-1 students as mentees; Year-2 to final-year students as mentors
- Mentoring period lasting for at least one year starting from the beginning of the academic year
- Mentees learning from senior students in various aspects of university life
- Strengthening peer mentors' personal qualities by assuming responsibilities and taking care of others
- "Small Group Mentoring" and "Student-LED Social Event" for mentors and mentees to foster more interactions

Enquiries:

Ms Nans Leung
Tel: 2616 7365
Email: nansleung@LN.edu.hk
Website: <https://www.LN.edu.hk/osa/outside-classroom-learning/peer-mentor>

Leadership Mentoring Programme (LMP)

Motivating students to pursue all-round development!

- Year-1, Year-2 and postgraduate students as mentees; successful executives and leaders from professional organisations as mentors
- Mentoring period lasting for six months from April to October every year
- Enabling students to learn from mentors' professional practice and guidance to get prepared for future career

Enquiries:

Mr Edwin FOK
Tel: 2616 7408
Email: edwinfok@LN.edu.hk
Website: <https://www.LN.edu.hk/osa/career/lmp>

Lingnanian Executive Mentoring Programme (LEMP)

Enabling students to gain invaluable career advice and guidance from experienced professionals in different fields!

- Year-3, Year-4 and postgraduate students as mentees; outstanding alumni and Lingnan associates as mentors
- Mentoring period lasts for one year starting from September every year
- Application opens in April
- Familiarising students with the real workplace and practical job-hunting skills/ strategies
- Enhancing students' employability after graduation

Enquiries:

Mr Albert SUEN
Tel: 2616 7407
Email: suenalb@LN.edu.hk

Mr Edwin FOK
Tel: 2616 7408
Email: edwinfok@LN.edu.hk

Website: <https://www.LN.edu.hk/osa/career/mentorship>

Banking & Finance Mentorship Programme

Enabling students to have a better understanding of the banking & finance field to facilitate their career planning and preparation for job hunting!

- All Lingnan students who are interested in the banking & finance industry
- Enhancing students' employability after graduation
- Enhancing their competitive edge via professional advice/ guidance from financial experts
- Mentoring period lasts for one academic year

// *LEMP is a great experience for students to meet some people in your field of interest, and a great chance to seek help and guidance from the mentor. This could help the final year students to have a clear direction in the future career.*

~Anonymous Student~ //

// *It is a very precious and fruitful experience, with the help from my mentor. The other mentee and I learnt a lot from our mentor, such as industry insight and mentor's past experience on job hunting. I felt grateful that I have participated in this programme.*

~Anonymous Student~ //

// *Good programme to meet the talents in specific industries that you are hoping to enter.*

~Anonymous Student~ //



Student Development Awards

Precious chance for students to join meaningful programmes for their whole-person development!

- Offering a wide range of student development awards
- Subsidy from OSA to support students to join the programmes



Interacting with the youths around the globe!

The Athens Democracy Forum in Association with the New York Times

- Organised by the Global Liberal Arts Alliance and Deree-The American College of Greece
- Student delegates around the world gathering and discussing the issues of democracy at the foot of the Acropolis in Athens
- Enabling students to mingle with international leaders and scholars



Maximising students' limits physically and mentally!

Providence Foundation Outward Bound Leadership Training Awards

- Unleashing the potential of student leaders
- Strengthening problem-solving skills through team-building activities
- Discovering different types of leadership styles, through outdoor experiential learning in a seven-day journey

Enquiries:

Ms Emily CHEUNG
Tel: 2616 8484
Email: emilycheung2@LN.edu.hk



// The seven-day journey was a tough but thought-provoking and treasurable experience for me. The programme provided a wide variety of outdoor activities that aimed to brush up on one's leadership and communication skills, boost confidence and connect with nature, including kayaking, hiking, camping and so on.

Apart from mastering practical camping skills and learning different sports, there were many obstacles. Frankly speaking, the training was definitely strenuous. Not only did we bear 15-20 kg of gear and go on hikes, but we also did not shower for seven days, under the scorching hot weather. As a hygienic person with a sedentary lifestyle, it was physically and mentally suffering as I was completely drained and stinky. One of the things that drove me to continue my way was the encouragement from my teammates. I genuinely appreciate all the assistance and efforts from my teammates, helping me to overcome many challenges.

What makes this course captivating was that I was able to visit unreachable areas with magnificent sceneries in Hong Kong and bond with nature. On normal days, I never go kayaking and I only visit islands which are accessible by public transport. However, in this journey, I visited some secret spots with stunning views and fewer people in Hong Kong. It was unforgettable to watch the sunset while cooking at the top of the Thunder Rock, overlooking the landscape of Sai Kung. I was re-energised by the gentle breeze with the scent of grass. I will always cherish the memories of this adventurous journey.

WONG Sze Yu Charlotte
(Year 1 student, BA-Chinese) //

Language Learning Opportunities

Lingnan Language Enhancement Initiative (L²EI)

In order to create a multi-cultural and multi-lingual campus and promote cross-cultural appreciation, the University encourages interaction and integration among local, mainland and overseas students. Accordingly, Lingnan Language Enhancement Initiative (L²EI) is launched to enhance students' language competency for nurturing multi-lingual learning and cross-cultural appreciation among students. Under L²EI, OSA, the Centre for English and Additional Languages (CEAL) and the Chinese Language Education and Assessment Centre (CLEAC) will be organising programmes to cater for the needs of students. In addition, a funding scheme: Student-initiated Multi-Cultural and Multi-Lingual Enhancement Programmes Campus Fund (MMCF) is introduced by OSA to provide students with funding for organising activities in contribution to language learning and cultural exchange.



Enquiries:

Mr Bmos CHENG

Tel: 2616 7410

Email: bmoscheng@LN.edu.hk

Website: <https://www.LN.edu.hk/osa/l2ei>

English and Additional Languages

Supported by the Centre for English and Additional Languages (CEAL)

English Language Support Service (ELSS)

We provide tutoring, advice and guidance on using English for academic writing, formal presentations, informal settings and IELTS. We also organise a wide range of social activities for you to practise English in a relaxed and informal environment and meet people from other cultures!

Visiting English Tutors (VETs)

ELSS is run by our team of full-time Visiting English Tutors, who offer English expertise with a friendly face daily during drop-in consultations or one-to-one tutorial appointments. Our services span academic and social, and include:

Academic English Support

- Drop by LBY202 any day of the week between 10:30 and 18:00 or book an appointment for one-on-one tutoring
- Book an IELTS workshop for practice of the writing, speaking, listening and reading sections of the exam
- Book a writing consultation for assignments such as essays, or professional documents such as CVs
- Book a speaking consultation for help with presentations, job interviews and presentation skills
- Book a small-group workshop based on CEAL courses

Social Activities for English Practice

- English Corner: for an informal chat with us and a group of students
- Game Nights: join us and play different board games in small groups
- Movie Nights: watch and discuss a film together with us
- Outings and Local Sightseeing Tours
- Student Hostel Activities with hall tutors

Enquiries:

LBY202, 2/F, B.Y. Lam Building

Tel: 2616 7984

Email: elss@LN.edu.hk

Website & appointment booking: <https://elss.LN.edu.hk>

Follow our Instagram for all the latest!



ID: [cealelss](https://www.instagram.com/cealelss)

Additional Languages

CEAL offers beginner and intermediate-level courses, both credit and non-credit bearing, in French, Spanish, Korean and Japanese. For further information, please email: addlang@LN.edu.hk

Career Preparation

Career Advising Services

Plan ahead and create your own road map to navigate towards career success!

- Advising students to plan career choices matching with their interests and aptitude
- Enriching students' development of requisite skills and abilities
- Providing the latest market and job information



Career Education and Development

- Alumni sharing sessions, work experience sharing sessions, etc.
- Job Hunting Forums, career information sessions and exhibitions, company visits, Talks with CEOs, career planning and management talks/ workshops

Career Preparation and Advising

- Career Empowerment Programme (CEP)
- Mock interviews, CV writing, personal grooming, business etiquette, mock recruitment written test, etc.
- Individual coaching and consultation sessions
- Public speaking and leadership training

Job Information

- Job Information Platform (JIP) (for Lingnan students only): <https://jobs.LN.edu.hk>
- Joint Institutions Job Information System (JIJIS): <https://www.jijis.org.hk/>
- E-newsletter "Career News"
- Career Services Facebook: [lingnancareer](https://www.facebook.com/lingnancareer)
- Career Services Instagram: [lingnancareer](https://www.instagram.com/lingnancareer)
- LinkedIn: <https://www.linkedin.com/company/lingnancareer>

Internships

Local

- Local Summer Internship Programme
- LUAA Summer Internship Programme
- Administrative Service Internship Programme in the HKSAR Government
- Post-Secondary Student Summer Internship Programme in the HKSAR Government

Mainland

- The Chinese General Chamber of Commerce GBA Summer Internship Programme
- HKUYA Student Exchange Network "New Youth" Series Internship Programme
- Youth Internship Programme at the Palace Museum in Beijing
- Shanghai-Hong Kong Future Leaders (Lingnan Elites) Internship Programme
- Young Talent Internship Experience*

Overseas (Asia, Europe, USA, Australia, etc.)

- ASEAN Internship Scheme for Hong Kong Higher Education Students
- Global Internships*
- Global Y's Trainee Programme
- VolTra International Workcamps
- Operation Zhang Qian- Undergraduate Summer Internship Programme
- Japan Culture Learning & Internship Programme @Kyushu

Virtual Internship

- Virtual Internship Programme (host companies include local and global firms)

* Also available under Virtual Internship Programme

Please visit the following link for latest information: <https://www.LN.edu.hk/osa/career/internships/virtual>

Public Speaking and Leadership Training

Lingnan University Toastmasters Club

- Learn and practise English public speaking in a fun and supportive environment while earning internationally recognised public speaking and leadership badges
- Participate in various activities like conferences, speech contests, skills workshops and lots of networking activities

Website: <https://lingnanu.toastmastersclubs.org/>

Enquiries:

Mr Albert SUEN

Tel: 2616 7407

Email: suenalb@LN.edu.hk

Ms Angie LAU

Tel: 2616 7023

Email: angielau@LN.edu.hk

Ms Shirley SIU

Tel: 2616 8653

Email: shirleysiu2@LN.edu.hk

Mr Edwin FOK

Tel: 2616 7408

Email: edwinfok@LN.edu.hk

Career Hotline: 2616 7406 / 2616 7446

Website: <https://www.LN.edu.hk/osa/career>

Support Services

Counselling Services and Personal Development

“What mental health needs is more sunlight, more candor, and more unashamed conversation.” – Glenn Close

Personal Counselling

- Adjusting to university life
- Managing stress and emotion
- Coping with mental health issues
- Setting personal goals
- Improving interpersonal and communication skills etc.

Psychological Testing

- Providing psychological testing to students with concerns about their cognitive and emotional functioning
- Identifying personal strengths, weakness and other psychological issues

Stress Management Workshops

- Organising workshops for enhancing students' stress coping and management skills
- Conducting psychoeducational talks and seminars to facilitate better life adjustments for students

Mental Health and Psychological Wellbeing

- Conducting mental health programmes and workshops for students and hostel staff
- Offering a variety of training to the Wellbeing Ambassadors who render peer support for students in need

Being a university student can be both exciting and stressful. There is no shame to talk about your life difficulties and it's right to seek help from counselling service. Come and make an appointment with us!

Counsellors:

Dr Niki HO
Tel: 2616 7032
Email: nikiho@LN.edu.hk

Dr Gloria WONG
Tel: 2616 7401
Email: gloriawong@LN.edu.hk

Mr Elton NG
Tel: 2616 7031
Email: eltonng@LN.edu.hk

Ms Rebekah WONG
Tel: 2616 7400
Email: rebekahwong@LN.edu.hk

// I enter the counselling service and never regret this choice. As they say: “all problems in our heads”. The counselling service helped me a lot to overcome my study-related stress, anxiety and restore my confidence. What I regret, is that I did not register for the service earlier.

// ~Anonymous Student~ //



Enquiries:

Location: LYH318, 3/F, Lau Lee Yuen Haan Amenities Building
Tel: 2616 7024
Email: counsel@LN.edu.hk
Online booking: <https://www.LN.edu.hk/osa/counselling>
Office hours: Monday to Friday
9:00am to 12:30pm & 1:30pm to 5:21pm



Wellness Programmes

Your journey to a healthier you starts here!



Campaign and Exhibitions

- Health Week in October to promote physical wellness and general healthcare
- Wellness March in Spring to promote mental wellness and happiness
- Health Exhibitions to offer thematic displays and fitness testing
- Virtual sports campaign for students to do sports in their free time, such as RunLingU, Virtual Hiking, Virtual Rope-skipping challenges
- Campaigns including vaccination, wellness promotion and ambassadors programme

Enquiries:

Dr Kam-ming MOK

Tel: 2616 7301

Email: kmmok2@LN.edu.hk

Ms Rebekah WONG

Tel: 2616 7400

Email: rebekahwong@LN.edu.hk

Living Well Academy

- Wellness Hotspot to promote a better quality of life for students: ILP Physical Fitness and Well-being domain, ILP Social and Emotional Well-being domain
<https://www.LN.edu.hk/osa/wellness-hotspot>
- Wellness Buffet for students to enjoy videos, podcasts and other resources in their free time
<https://www.LN.edu.hk/osa/wellness-hotspot/wellness-buffet>
- Wellness Journey at Lingnan to promote the benefits of a healthy lifestyle through the campus peaceful environment and some simple practices
<https://www.LN.edu.hk/osa/wellness-hotspot/wellness-journey>

Enquiries:

Dr Gloria WONG

Tele: 2616 7401

Email: gloriawong@LN.edu.hk

Dr Kam-ming MOK

Tel: 2616 7301

Email: kmmok2@LN.edu.hk



Support for International and Mainland Students

Foster non-local students' successful adaptation to the new environment in Hong Kong.

Strengthening non-local students' social network for better integration into Lingnan!

Orientation and Support

- Provide pre-arrival enquiry service, arrival pick-up service and tailor-made orientation activities
- Join the New Student Orientation (NSO) with local new students and peer mentors
- Enjoy a full range of student services and programmes

Rendering warm support for non-local students by Lingnan staff!

Lingnan Host Family Scheme (LHFS)

- One-year non-residential scheme
- Host family (Lingnan staff member) renders care and support to non-local students and facilitates their adaptation and integration into Hong Kong
- Enable non-local students to build a stronger sense of belonging to the University and get a deeper understanding of Hong Kong society

Enriching students' cultural exposure and exchange on campus!

University-wide Cultural Events

- Chinese New Year Carnival
- International Day
- Thanksgiving Celebrations
- Lingnan University Cultural Ambassador Programme

Enquiries:

Ms Joey LEUNG

Tel: 2616 7302

Email: joeyl@LN.edu.hk

Website: <https://www.LN.edu.hk/osa/cross-cultural-integration>



Host Mother Ms CHAN Ching Yi Karie (right) and her hostees Ms NAN Ei Chan Myae (left) and Ms BILGUN Selin (middle)

// The Lingnan Host Family Scheme was a wonderful chance for me to experience many things and create memories with my beautiful host mum Karie and my one and only host sister Ei Chan. The scheme started right after the beginning of the semester so Karie felt like a person that I've known for a very long time. We experienced fun things together. I tried Taiwanese food and Lingnan House for the first time, we made nice memories in workshop and we experienced Star Ferry together. Karie prepared her childhood snacks with a postcard when we first met. She is such a warm person with a warm heart. I am so lucky that I have a chance to meet her and it is comforting knowing that I have someone to talk to whenever I'm in need. If I had a chance to join the Lingnan Host Family Scheme until I graduate, I will definitely do that. Biggest thanks to Karie, Ei Chan and OSA for helping me adjust to my new home!

BILGUN Selin

(Year 2 student, BLA-Global Development and Sustainability) //

Support for Students with Special Educational Needs

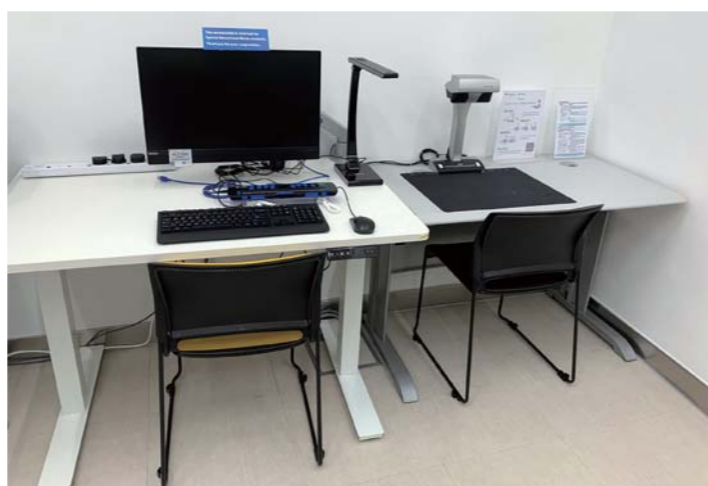
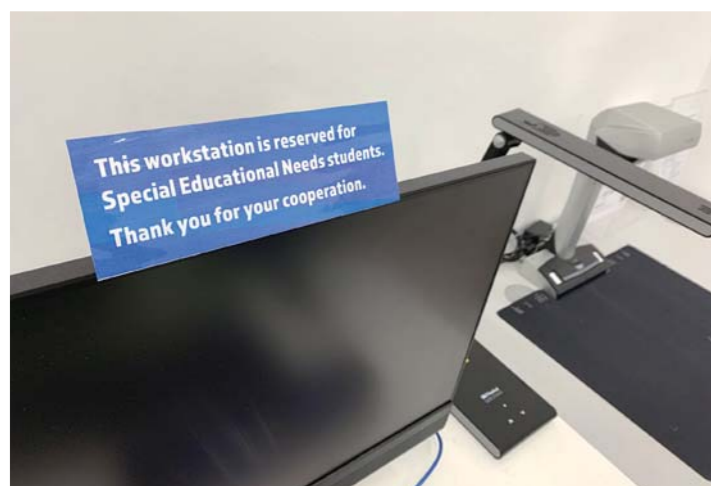
Develop a mutually-supported campus with equal opportunities for all students!

Register of Services

Students with special educational needs (SEN) should register with OSA at the beginning of each academic year

Website: <https://www.LN.edu.hk/osa/sen>

Support Available



Learning Support

- OSA will liaise with departments to implement learning support plan to SEN students such as special facilities, seating arrangement for lectures/ tutorials/ library. Special examination arrangements will be arranged according to the needs of individual students

Subsidies and Scholarships Available for SEN Students

- <https://www.LN.edu.hk/osa/scholarships> (Scholarships)
- <https://www.LN.edu.hk/osa/financial> (Financial Assistance)
- <https://www.LN.edu.hk/eoc/one-stop-shop-online-resources/financial-assistance-to-sen-students> (Financial Assistance to SEN Students)

Counselling Services

- <https://www.LN.edu.hk/osa/counselling>

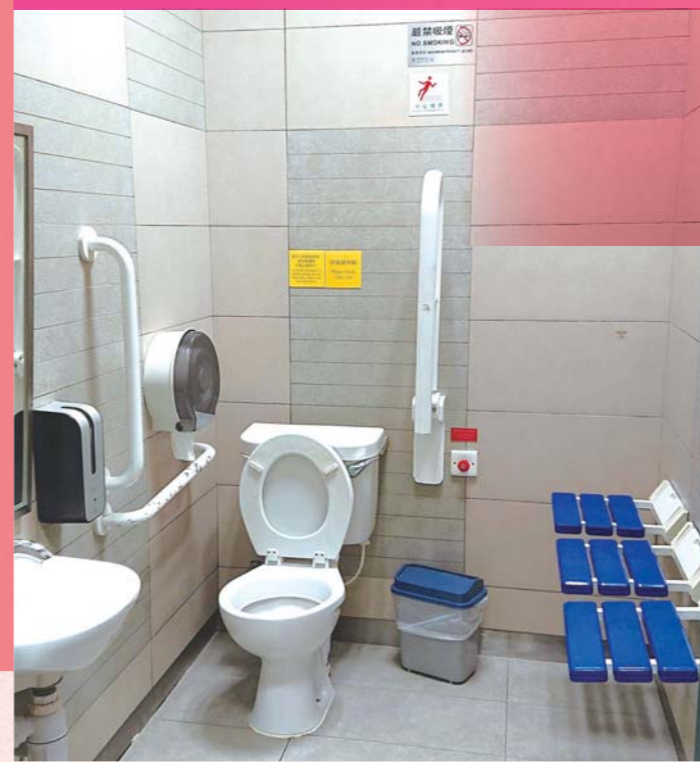
Peer Support Group

- Registered students could join activities and workshops in the Peer Support Group



Equipment and Accessibility for SEN Students on Campus

- <https://www.LN.edu.hk/eoc/one-stop-shop-online-resources/equipment-and-facilities-for-sen-students>



Barrier-Free Access

- <https://www.LN.edu.hk/eoc/one-stop-shop-online-resources/barrier-free-access-in-lingnan-university>



Financial Assistance and Scholarships

Financial Assistance

Government Financial Assistance (administered by the HKSAR Government)

For students enrolled in UGC-funded programmes:

- Tertiary Student Finance Scheme – Publicly-funded Programmes (TSFS)
- Non-means-tested Loan Scheme for Full-time Tertiary Students (NLSFT)

For students enrolled in self-financed programmes:

- Financial Assistance Scheme for Post-secondary Students (FASP)
- Non-means-tested Loan Scheme for Post-secondary Students (NLSPS)

Other Financial Assistance (administered by OSA)

- University Student Finance Scheme (USFS)
- University Emergency Fund

Deferment of Tuition and Hostel Fees

- Full-time undergraduate government grant/ loan applicants
- Application period will be announced by OSA through emails

Enquiries:

Ms Collia LAW

Tel: 2616 7305

Email: osa-finance@LN.edu.hk

Website (Financial Assistance):

<https://www.LN.edu.hk/osa/financial/gov>

Website (Scholarships & Prizes):

<https://www.LN.edu.hk/osa/scholarships>

Scholarships and Prizes

- Donated by individuals and various organisations
- Most scholarships awarded based on academic merit and nominated by respective faculty or department
- Some scholarships will be opened for application; to be announced by OSA through emails and website
- OSA assists students in preparing for scholarship interviews

External Awards (administered by outside organisations)

- Applications open to Lingnan students
- To be announced by OSA through emails and website

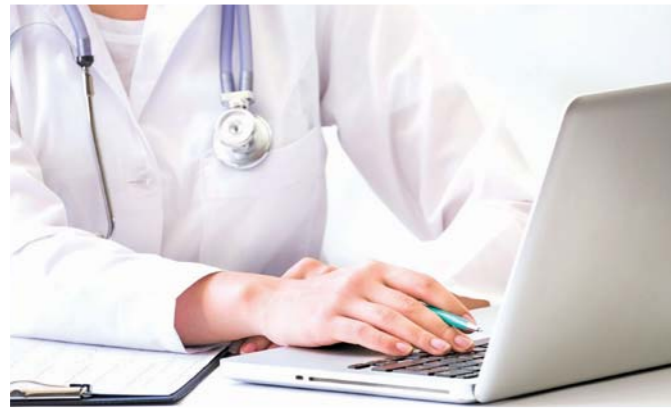


// I would like to thank Lingnan University for providing us with a wealth of opportunities to learn, grow and develop our skills to be all-round future leaders with a high social conscience. Lingnan endeavours to cultivate students' holistic growth, offering us extensive and enriching activities, including service-learning courses, internships, mentorship and exchange programmes. All these exposures have developed our full potential and enhanced our critical thinking and independent skills for better career preparation.

YU On Sang Anson
(Year 4 student, BA-Translation) //

Student Health Services

Keeping healthy is a key to success!



Student Medical Benefits Scheme

- Available for full-time students
- Providing general doctor's consultation with medications from designated clinics
- Offering simple X-ray and laboratory tests upon presentation of a referral letter

Student Dental Scheme

- Available for full-time students
- Paying a nominal fee for simple dental treatments at designated dental clinics

Enquiries:

Ms Colia LAW
Tel: 2616 7305
Email: osa-finance@LN.edu.hk
Website: <https://www.LN.edu.hk/osa/health/medical-dental>

Health Education Programmes

- Talks and workshops about health promotion and illness prevention
- Both physical and social well-being education under Integrated Learning Programme (ILP)
- Activities and campaigns including health exhibition, blood donation, vaccination, wellness promotion and ambassadors programme

Enquiries:

Dr Kam-ming MOK
Tel: 2616 7301
Email: kmmok2@LN.edu.hk

Mr Elton NG
Tel: 2616 7031
Email: eltonng@LN.edu.hk

Catering Services

Three on-campus catering outlets and a coffee corner are available for students at the Lau Lee Yuen Haan Amenities Building!

Canteen (fast food)

- Providing Chinese and Western cuisine, set meals and snacks

Cafe

- Serving Western cuisine, salads, snacks and sandwiches

Coffee Corner

- Providing freshly brewed coffee, desserts, pastry, sandwiches with specialty bread & salads

Chinese Restaurant

- Serving with Chinese cuisine and dim sum

Catering Committee

- Comprising of staff members and student representatives
- Monitoring the services and hygiene of the catering outlets
- Students with special diets or any needs due to religious and cultural practice may discuss their needs with the committee or the manager of the Canteen



Enquiries:

Mr Edwin FOK
Tel: 2616 7408
Email: edwinfok@LN.edu.hk
Website: <https://www.LN.edu.hk/osa/catering>

Communication Channels

Students are encouraged to reflect their views directly!



Daily Communication

- Students should read emails regularly as the University disseminates information and announcements via emails, e.g. invitation to apply for programmes/ scholarships/ financial assistance

Questionnaires and Focus Groups

- Giving opinions to University offices in questionnaires
- Participating in focus groups to help the University make improvements

Direct Communication and University Committees

- Contacting the offices/ academic departments/ professors directly on general matters
- Channelling your opinions to committees via student representatives of the University

Enquiries:

Ms Nans LEUNG

Tel: 2616 7365

Email: nansleung@LN.edu.hk

Website: <https://www.LN.edu.hk/osa/support-services/communication-channels>

Important Information You Must Read

LINGNAN UNIVERSITY Guidelines for Learning

As a community with emphasis on the Liberal Arts ethos, Lingnan aims to foster in its students, aside from a strong academic foundation, qualities such as a strong sense of social responsibility, mutual respect and consideration. To achieve this aim, students are expected to exemplify behaviour consistent with these values in all facets of their university life – in classrooms, in hostels, in the library, and in all kinds of campus activity. While the freedom and autonomy of individual students are respected, a sense of social responsibility would suggest the following guidelines.

Students should demonstrate respect for academic staff, non-academic staff and fellow students. They are expected to be proactive in the learning process, and develop the following good practices, which are important for successful and effective learning:

1. Active learning. Students should be well prepared in mind and body for effective learning. They should be attentive in class, and be actively involved in learning activities, particularly in tutorials, seminars and case discussion. To facilitate active participation and effective learning, it is essential that students make the necessary preparation – for instance, completing the prescribed reading before class to enhance their learning.
2. Study Hours. For each hour of class contact, the expectation is that students will undertake 2 additional hours of personal study. Personal study may include preparation for in-class activities, completing assignments, and/or revision, etc.
3. Class attendance. Teachers have prepared the teaching materials for each class according to the course syllabus. It will therefore not be possible for teachers to repeat the materials to students who are absent from a class. Those who are absent have the responsibility to obtain the relevant teaching materials from fellow students/MOODLE and to undertake the make-up work as appropriate. If students feel that some classes are uninteresting, or that the material is beyond their grasp, they should voice their concerns via the many channels (e.g. talking to the teachers directly, expressing their views at Mid-Semester Online Course Teaching and Learning Enhancement and the Staff-Student Consultation Committee) available for this purpose.

4. Punctuality. Students who are late for class will affect the progress of teaching and learning for themselves and their fellow students. Therefore those who are late may, at the discretion of the instructor, be barred from the classroom.
5. Self-discipline. Students should refrain from behaviour that adversely affects instructors' teaching and other students' learning, such as talking, chatting, whispering, sleeping, using mobile phones for non-academic activities or eating in class.
6. Personal integrity and academic honesty. The University is a place of learning. Students should not copy assignments, coursework, projects or dissertations. These acts constitute plagiarism, which will be referred to the Board of Examiners concerned.
7. Intercultural experience. Mutual respect is a key to successful intercultural communication. On the occasions with the presence of non-local students, whether in classrooms or in informal interaction, students should be considerate and adopt a common language as far as practicable. A positive, open dialogue is always conducive to cross-cultural learning and intercultural understanding.

Senate: 27 June 2007

Revisions approved in November 2011 and December 2019

Plagiarism

What It is and How to Avoid It?

Definition and examples adapted from Writing Tutorial Services, Indiana University, Bloomington, IN
(Source: <https://wts.indiana.edu/writing-guides/plagiarism.html>)

What is Plagiarism?

- Plagiarism is using others' ideas and words without clearly acknowledging the source of that information

How Can Students Avoid Plagiarism?

- Avoid plagiarism, you must give credit whenever you use another person's idea, opinion, or theory
- Any facts, statistics, graphs, drawings—any pieces of information—that are not common knowledge
- Quotations of another person's actual spoken or written words; or paraphrase of another person's spoken or written words

Unacceptable and Acceptable Paraphrases

Here's the ORIGINAL text, from page 1 of *Lizzie Borden: A Case Book of Family and Crime in the 1890s* by Joyce Williams et al.:

- *The rise of industry, the growth of cities, and the expansion of the population were the three great developments of late nineteenth century American history. As new, larger, steam-powered factories became a feature of the American landscape in the East, they transformed farm hands into industrial laborers, and provided jobs for a rising tide of immigrants. With industry came urbanization the growth of large cities (like Fall River, Massachusetts, where the Borden's lived) which became the centers of production as well as of commerce and trade.*

Here's an UNACCEPTABLE paraphrase that is plagiarism:

- The increase of industry, the growth of cities, and the explosion of the population were three large factors of nineteenth century America. As steam-driven companies became more visible in the eastern part of the country, they changed farm hands into factory workers and provided jobs for the large wave of immigrants. With industry came the growth of large cities like Fall River where the Borden's lived which turned into centers of commerce and trade as well as production.

What makes this passage plagiarism?

The preceding passage is considered plagiarism for two reasons:

- the writer has only changed around a few words and phrases, or changed the order of the original's sentences
- the writer has failed to cite a source for any of the ideas or facts

If you do either or both of these things, you are plagiarising.

Unacceptable and Acceptable Paraphrases

Here's an ACCEPTABLE paraphrase:

- Fall River, where the Borden family lived, was typical of northeastern industrial cities of the nineteenth century. Steam-powered production had shifted labor from agriculture to manufacturing, and as immigrants arrived in the US, they found work in these new factories. As a result, populations grew, and large urban areas arose. Fall River was one of these manufacturing and commercial centers (Williams 1).

Why is this passage acceptable?

This is acceptable paraphrasing because the writer:

- accurately relays the information in the original uses her own words
- let her reader know the source of her information

Strategies for Avoiding Plagiarism

1. Put in **quotations** everything that comes directly from the text especially when taking notes.
2. **Paraphrase**, but be sure you are not just rearranging or replacing a few words. Write the idea in your own words without peeking.
3. **Check your paraphrase** against the original text to be sure you have not accidentally used the same phrases or words, and that the information is accurate.

Online Tutorial on Plagiarism Awareness

- The online tutorial with videos and exercises is designed to help you understand what plagiarism is, how to avoid it and how to become a better writer. It will take you approximately one hour to finish it with additional materials and resources provided for your further studies at the end of the tutorial. Completion will be indicated by ticking the check-box at the end of the course.
- Students are **required to complete this online tutorial** ideally by November or they will be blocked from course registration for the coming academic year.

The link to the tutorial: <https://pla.LN.edu.hk>

Sexual Harassment

Examples of Sexual Harassment

- Unwelcome physical contact or actions (deliberately rubbing up against someone's body, kissing, hugging, etc.)
- Make wretched poses
- Make unwelcome sexual demands
- Make sex-related obscene jokes and comment on other people's figures
- Constantly questioning or insinuating other people's sex lives
- Circulate sexually explicit materials (email, instant message on a mobile app, etc.)

What can you do if you are sexually harassed?

1. Speak up and say "no" at the time to tell the harasser that his/her act is unwelcome and should be stopped immediately.
2. Keep a written record of the incidents, including the dates, time, location, witnesses and nature (what the harasser has said or done) and your response.
3. Get emotional support and advice from the people you trust.
4. Seek help from a non-governmental organisation (NGO) or a related organisation.
5. Report the incident to your supervisor if it happened at your workplace.
6. Lodge a written complaint with the Equal Opportunities Commission (EOC).
7. Consult a lawyer or institute legal proceedings at the District Court.
8. Report it officially:

Conciliation and complaint investigation processes are available to staff and students through the Sexual Harassment Investigation Panel (SHIP). All information will be kept in strict confidence. Please write to the President directly, or through the Office of the President, or through the online reporting/complaint channel: <https://www.LN.edu.hk/eoc/sexual-harassment/online-reporting-system>

Source:

Equal Opportunities Commission. Available at: <https://www.eoc.org.hk/compass/en/about-sexual-harassment/>

Academic Regulations for Undergraduate Programmes

All undergraduate students are required to comply with the rules and regulations of the University. For details, please refer to the Academic Regulations for Undergraduate Programmes on the Registry website:

<https://www.LN.edu.hk/reg/undergraduate-programmes/regulations-and-guidelines>

General Advice

IN CASE OF AN ACCIDENT

Report to the Security Control Room on the Ground Floor of the Wong Administration Building either in person or by telephoning 2616 8000 for assistance. If the condition is serious or involves injury or death, dial 999 for help at the same time to avoid delay in treatment. Keep calm and give accurate information as regards the accident and the exact location, etc.

IN CASE OF FIRE

In the event of a fire, all occupants must follow the appropriate evacuation instructions which are posted in common corridors or office area or teaching venues. Remain calm. Evacuate from the immediately threatened area. Alert persons nearby by shouting "Fire". Break the fire alarm glass. Make an immediate attack on the fire only if safe to do so. Close doors to isolate fire and smoke. Leave the building using the nearest stairway. Do not re-enter the building until clearance is given.

IN CASE OF GAS LEAKAGE

Remain calm. Evacuate immediately from the threatened area. Extinguish any naked flames. Do not touch any electrical switches. Do not use telephone or mobile phone in the threatened area. Shout to alert persons nearby. Do not re-enter the building until clearance is given.

IN CASE OF INJURIES

Assess the situation. If condition of the injury appears to be serious, dial 999 for an ambulance first. In case of suspected head or spinal injury, do not move the injured person. Do not touch the victim directly with your hands if he/she is suspected of suffering from electrical injury. Victim should be accompanied to hospital by either friends or staff.

IN CASE OF ROBBERY, THEFT OR ATTACK

The person(s) involved or anyone who witnessed the incident should report the case in detail to the Security Control Room on the Ground Floor of the Wong Administration Building either in person or by telephoning 2616 8000.

If safe to do so, remain at the location for assistance. When the security guard arrives, get ready to provide the following information:

- name(s) and address(es) of person(s) reporting the case;
- exact date, time and location where the case took place/ is discovered;
- full particulars of the case;
- description of suspect(s), if known;
- property stolen or damaged;
- injury (if any).

In case of petty crimes like theft of property from students in hostels, the canteen or in sports facilities where management staff can easily be notified, report the case to them as soon as possible.

IN CASE OF LOST AND/ OR FOUND PROPERTY

Any property found in the University should be passed to the Security Control Room on the Ground Floor of the Wong Administration Building.

IN CASE OF TYPHOON OR RAINSTORM

Please refer to the "Bad Weather Arrangements for Classes/Activities and Examinations" available at https://www.LN.edu.hk/f/upload/44088/badweather_arr.pdf

IN CASE OF DISCIPLINARY MATTERS

The Regulations Governing Discipline of Students are available at <https://www.LN.edu.hk/reg/undergraduate-programmes/regulations-and-guidelines>. Students are reminded that they are required to comply with all the rules and regulations stipulated by the University.

SAFETY MANUAL

A Safety Manual maintained and updated by Health, Safety and Environment Committee can be obtained through the link below:

https://www.LN.edu.hk/f/upload/46078/D-SafetyManual_final.pdf

Anti-fraud Information

In view of the increase in the number of crime cases relating to Investment Fraud, Employment Fraud, Telephone Deception and Cyber Security, the HKSAR Cyber Security and Technology Crime Bureau and Anti-Deception Coordination Centre (ADCC) of the Hong Kong Police Force have produced various materials of crime alert to strengthen public awareness of different forms of scam.

For detailed information, you may visit the related websites at:

CyberDefender:
<https://cyberdefender.hk/>

Anti-Deception Coordination Centre:
<https://www.adcc.gov.hk/zh-hk/home.html>

OSA Website:
<https://www.LN.edu.hk/osa/about/anti-fraud-information>



Please stay alert all the times to prevent falling victim to fraudulent activities.



Keeping your money safe from scams?



Do not disclose your personal particulars to strangers, including your names or HKID numbers



Do not disclose your online bank accounts and passwords to strangers



Do not access suspicious websites and download suspicious mobile applications



Submit electronic registration through one of the 21 participating retail banks



Remind your relatives and friends to stay vigilant against deception



If in doubt, please call the Anti-Scam Helpline 18222 immediately

ANTI-SCAM
防騙易
18222

Stay alert

Phone scams, fraudulent mails, emails and websites





校園地圖 Campus Map

- | | | |
|---------------|--|------------|
| ① 陳德泰大會堂 | Chan Tak Tai Auditorium | |
| ② 黃氏行政大樓 | Wong Administration Building | AD |
| ③ 李運強教學大樓 | Patrick Lee Wan Keung Academic Building | MB |
| ▪ 鄭森活圖書館 | Fong Sum Wood Library | |
| ④ 綜合運動大樓 | Indoor Sports Complex | |
| ▪ 田家炳游泳池 | Tin Ka Ping Swimming Pool | |
| ⑤ 何善衡樓 | Ho Sin Hang Building | HSB |
| ⑥ 梁鈺琚樓 | Leung Kau Kui Building | LKK |
| ⑦ 林炳炎樓 | B. Y. Lam Building | LBV |
| ⑧ 黃玉蘭樓 | Dorothy Y. L. Wong Building | WYL |
| ⑨ 劉仲謙樓 | Lau Chung Him Building | LCH |
| ⑩ 劉李婉嫻康樂樓 | Lau Lee Yuen Haan Amenities Building | LYH |
| ⑪ 郭少明伉儷樓 | Simon and Eleanor Kwok Building | SEK |
| ⑫ 潘蘇通運動場 | Pan Sutong Sports Ground | |
| ▪ 和富李宗德學生活動中心 | Wofoo Joseph Lee Student Activity Centre | |
| ⑬ 校長寓所 | President's Lodge | |
| ⑭ 訪客宿舍 | Visitors' Quarters | |

- | | |
|---------------------|--|
| A 永安廣場 | Wing On Plaza |
| B 現代花園 | Contemporary Garden |
| C 余近卿紀念園及紀念亭 | Yu Kan Hing Memorial Garden & Pavilion |
| D 乾新坊 (天幕) | Kin Sun Square (Skylight) |
| E 地下停車場入口 | Underground Car Park Entrance |
| F 有蓋停車場入口 | Covered Car Park Entrance |

- | | |
|-------------|-----------------------------|
| 學生宿舍 | Student Hostels |
| S1. 蒙民偉樓 | William M. W. Mong Hall |
| 東亞堂 | The Bank of East Asia Hall |
| S2. 香港崇正總會樓 | Tsung Tsin Association Hall |
| 霍藻棉樓 | Fok Cho Min Hall |
| S3. 忠信堂 | Chung Shun Hall |
| 逸民堂 | Yee Min Hall |
| S4. 林護堂 | Lam Woo Hall |
| S5. 賽馬會堂 | The Jockey Club Hall |
| S6. 賽馬會博雅堂 | The Jockey Club New Hall |
| S7. 黃浩川堂 | Wong Hoo Chuen Hall |
| S8. 伍潔宜堂 | Wu Jieh Yee Hall |

圖例 Legend

	行人出入口	Pedestrian Entrance
	行人路	Pedestrian Path
	行人天橋	Footbridge
	小徑	Footpath
	車路	Driveway
	巴士及小巴站	Bus & Minibus Stop

往：港鐵兆康站
To: Siu Hong MTR Station

波頓粵港澳青年创新创业交流基地

Boton Guangdong-Hong Kong Youth Innovation and Entrepreneurship Exchange Base

授 牌 单 位

中 央 文 明 工 程 大 學 粵 港 澳 青 年 創 新 創 業 交 流 基 地	深 圳 市 委 宣 傳 部	深 圳 市 委 統 戰 部	深 圳 市 政 協 辦 公 室
深 圳 市 政 協 經 濟 科 學 界 委 員 會	深 圳 市 政 協 港 澳 台 信 和 外 事 委 員 會	共 青 團 深 圳 市 委 員 會	深 圳 市 政 協 統 戰 委 員 會 統 戰 部
香 港 特 區 政 府 經 濟 科 學 發 展 局 粵 港 經 濟 交 流 中 心	香 港 廣 東 社 區 總 會	香 港 廣 西 社 區 總 會	港 區 省 級 政 協 委 員 聯 誼 會
香 港 經 濟 研 究 所	香 港 經 濟 研 究 所 總 會	澳 門 深 圳 經 濟 文 化 促 進 會	



嶺南大學 灣區交流考察團

Lingnan University

8 Castle Peak Road, Tuen Mun, N.T.
Hong Kong

Published by Office of Student Affairs
August 2023

<https://www.LN.edu.hk/osa>